

# Press Release

Contact: C. G. Steiner  
Phone: 913.897.2727

**For Immediate Release**  
Date: November 3, 2007

**Subject: West Industries Network SA Completes Feasibility Study for Bio-Wastes-To-Renewable Energy, Biofuels, Organic Foods, and Water Independence for the Sultanate of Oman**

*WaterSmart Environmental, Inc.* announces the completion of the feasibility study for the Sultanate of Oman. The proposed technology is intended to increase economic development for the entire nation while also creating a zero waste-to-landfill and zero carbon footprint society.

WaterSmart Environmental is marketing its Kyoto Protocol compliant wastes-to-energy technology on an economic development platform to concentrated animal feeding operators and to municipalities. Animal farmers benefit by purchasing biodiesel, electricity, and natural gas (methane) at a 20% discount from retail. Municipalities also benefit by making biodiesel, electricity, natural gas, and potable water available to its citizens and businesses at a 20% discount from existing prices. The technology is marketed on a build-own-operate basis thereby eliminating the necessity for local sales and property tax increases since project financing is entirely secured from the financial marketplace. Municipalities that embrace the waste-to-energy technology automatically become zero waste-to-landfill communities. The waste-to-renewable energy technology has been slowly developed over the last 10 years. It is just now being introduced to the international marketplace. The technology has the clear potential for making every single city throughout the world energy and fuels independent while reducing oil and natural gas imports. The technology will also permit every single city throughout the world to improve water and wastewater treatment infrastructure while creating jobs and investment opportunities. The waste-to-energy technology can also be applied to Sugar Cane Mills as well as Pulp & Paper Mills with equal success. Both types of mills become energy, food, fuels, and water independent while significantly increasing profits from routine operations. In the case of Sugar Cane Mills temporary and seasonal jobs turn into full time better paying jobs.

**Widespread use of the technology carries with it the potential for contributing substantially to the reversing of global warming.**

*WaterSmart Environmental, Inc.* is a provider of waste-to-energy, food independence, water independence, and energy independence technologies and a manufacturer of highly engineered water purification components and systems. The company designs and builds a wide variety of water treatment equipment including packaged water and wastewater treatment plants, UltraPac™ aerobic package plants, OAT™ Process anaerobic digesters with associated energy production, aerators, filters, PuriSep™ and SmartWater™ oil/water and solids/liquids separators, RainDrain™ perimeter trench sand filters for stormwater runoff, dissolved air flotation separators, air strippers, complete skid assembled aqueous waste treatment plants, FilterFresh™ skid mounted potable water production plants, skid mounted waste-

water treatment systems for laundromats, commercial laundries, and car/truck wash facilities with water reclamation and reuse, softeners, demineralizers, activated carbon treatment equipment, and water purifiers for domestic and international markets.

*Worldwide Promoters of Renewable Energy, Organic Foods, Biofuels,  
& **Water** Independence Technologies by and for the Common Man*



**PROPRIETARY AND CONFIDENTIAL**

# **FEASIBILITY STUDY**

## **Sultanate of Oman**

**BioWastes-To-Renewable Energy, Food, Biofuels, and Water Independence**



***WaterSmart Environmental, Inc.***  
**[www.watersmart.com](http://www.watersmart.com)**

## **WaterSmart Environmental, Inc.**

Post Office Box 26346  
Shawnee Mission, Kansas 66225-6346  
Phone: 913.897.2727 ♦ Fax: 913.897.1902  
[wefindsolutions@watersmart.com](mailto:wefindsolutions@watersmart.com) ♦ [www.watersmart.com](http://www.watersmart.com)  
*Promoting World Peace Through Economic Prosperity*

November 3, 2007

Dear Investor:

Oman is a middle-income economy in the Middle East with notable oil and gas resources, a substantial trade surplus, and low inflation. Sustained high oil prices in recent years have helped build Oman's budget and trade surpluses and foreign reserves. Oman joined the World Trade Organization in November 2000 and continues to liberalize its markets. It ratified a free trade agreement with the US in September 2006 and, through the Gulf Cooperation Council, seeks similar agreements with the EU, China and Japan. To reduce unemployment and limit dependence on foreign labor, the government is encouraging the replacement of foreign expatriate workers with local workers. Oman actively seeks private foreign investors, especially in the industrial, information technology, tourism, and higher education fields. Industrial development plans focus on gas resources, metal manufacturing, petrochemicals, and international transshipment ports.

The proposed project includes the construction of 60 project buildings measuring 1 km x 1 km x 3 stories high. The buildings will engage in agricultural production and processing activities to produce food products for the export markets to create visible cash flow that will repay debt financing requirements. Each of the project buildings will be connected together thereby providing the infrastructure that enables potable water distribution as well as sanitary wastewater collection. Each of the 60 project buildings will employ 1,500 workers (90,000 total employees) that will be paid US\$150 per week.

Before beginning each project building some 1,500 temporary homes will be provided and barge shipped to the project location. These temporary homes will house the employees. After the completion of the project most, if not all, of the employees will move into the apartments that are included in the project building itself. The temporary homes will be equipped with electric appliances such as a toilet, stove, refrigerator, hot water heater, and air conditioning. Bathrooms will also be included with gray water disposal in a constructed drain field. Water treatment will also be provided by sea water desalination. The electricity will be provided by temporary diesel oil fueled generators. Each project building will include a hospital and educational facilities. The total impact on the economy of Kuwait will be immense and sustainable.

The project will be implemented in two phases. The first phase consists of the construction of a single project building which measures 1 km x 1 km x 3 stories high constructed with precast concrete panels. The precast concrete panels will be manufactured using recycled inorganic materials from municipal solid wastes. The building will engage in pig farming, tilapia fish production, and biofuels production. The biofuels consist of renewable natural gas and biodiesel. Most of the processed pork and tilapia fish will be sold to export commodity markets. Spirulina microalgae farming

Investor Letter  
November 3, 2007  
page 2

will also be accomplished with some of the microalgae converted into biodiesel biofuel and the balance used as fish and pig feed. All of the wastes associated with municipal solid waste management and the treatment of food production and processing wastes will be accomplished through anaerobic digestion to produce methane and carbon dioxide gases. Some of the methane will be converted into electricity with the balance sold as natural gas at a 20% discount from existing retail.

The second phase of the project will consist of adding additional stories to the existing building. The added stories will engage in additional agricultural activities that will encourage outdoor farmers to move indoors where there are no fertilizer, temperature, irrigation, or other issues - ever. The second phase will also include the construction of concrete freeways (not tollways) that will connect all of the project buildings together. The freeways will also include a light rail transit system common to the major cities of the world. All of the communities will become a zero waste-to-landfill society with a zero carbon footprint—a rather awesome marketplace accomplishment. Your investment interest is hereby solicited. With Warm Regards I am

Very truly yours,

***WaterSmart Environmental, Inc.***



C. G. (Chuck) Steiner  
President and CEO

enclosures

CGS/mns



# Nonrecourse Project Capital Cost Structure

## Sultanate of Oman

### BioWastes-To-Renewable Energy, Food, BioFuels, and Water Independence Plant

The total estimated capital and development costs of the design-build-own-operate wastes-to-renewable energy project total \$501,226,585 (plus funding broker commissions) utilizing both new and remanufactured process equipment. The major components of capital and other costs are as follows:

Item Description	Cost in US\$
Anaerobic Digester Feed Tank Constructed Cost <sup>1</sup>	2,000,000
Biodiesel Manufacturing Equipment Constructed Cost <sup>2</sup>	15,000,000
Building Size 1 km x 1 km x 2 stories high Constructed Cost <sup>3</sup>	75,000,000
Cement Kiln Constructed Cost <sup>4</sup>	12,000,000
Concrete Ready Mix Batch Plant Constructed Cost <sup>5</sup>	3,000,000
EAF Steel Recycling Process Equipment Constructed Cost	3,000,000
Fish Processing Equipment Constructed Cost <sup>6</sup>	500,000
LED Lighting Purchase Cost <sup>8</sup>	10,000,000
Liquefied Nitrogen Air Separation Equipment Procurement Capital Cost	15,000,000
Liquefied Nitrogen Delivery Equipment Procurement Capital Cost	500,000
Liquefied Nitrogen Storage Tank Constructed Cost	2,000,000
LNG (Liquefied Natural Gas) Storage Tank Constructed Cost	2,500,000
Methane Gas Compression Equipment Installed Capital Cost	10,000,000
Potable Water Storage Tank Constructed Cost	2,000,000
Photobioreactor Capital Equipment Constructed Cost <sup>7</sup>	100,000,000
Power Generation Equipment Procurement Cost <sup>9</sup>	56,650,000
Reverse Osmosis Equipment Procurement Cost	2,000,000
Sow procurement Costs	5,000,000
Two-Phase Anaerobic Digester Constructed Cost <sup>1</sup>	74,780,080
<b>Subtotal Project Costs</b>	<b>390,930,000</b>
Add 15% Contingencies	58,639,500
<b>Total Capital Costs</b>	<b>449,569,500</b>
Finance Charges	8,000,000
Interest During Construction	20,000,000
Administration/Legal	150,000
Permitting	20,000
Technology & Development Cost	284,559,700
Project Development Fee @ 3% of US\$449,569,500	13,487,085
Working Capital	10,000,000
<b>Total All Costs</b>	<b>785,786,285</b>

#### Nonrecourse Project Financing Will Be Structured As Follows:

Developer Equity as Technology, 70% <sup>10</sup>	284,559,700
Investor Equity as Cash, 30%	94,712,728

Finance	406,513,857
Loan Term, Years	10
Interest Rate	10%
Developer will contribute 70% equity in the project as the value of the technology. <sup>10</sup>	
Investor will contribute US\$94,712,728 cash and the balance will be financed.	

**With Following Notes:**

1. The anaerobic digester and its associated feed tank will be constructed of precast concrete panels. The panels will be manufactured by Wieser Concrete Products, Inc. and barge shipped to destination project site. The Wisconsin based precast concrete manufacturer POC is Phil Miller @ phone 800.325.8456 (see <http://www.wieserconcrete.com/about.html>).
2. The biodiesel production equipment will be designed and manufactured by California based R. C. Costello & Associates, Inc. The POC is Rocky Costello, P.E. @ phone 310.792.5870 (see <http://www.rccostello.com/>).
3. The low cost of the project building is made possible by the 100% internal recycling of inorganic wastes that are produced from the anaerobic digestion process. These inorganic wastes are combined with cement and water in the production of precast concrete panels. The special purpose project company will produce its own cement to further minimize construction costs. See attached WSE Engineering Drawing No. S-6099-1 for additional details. The POC at WaterSmart Environmental is Chuck Steiner @ 913.897.2727 (see <http://www.watersmart.com/>).
4. The cement kiln will be sourced through Canada based Cement Process Consulting, Ltd. The POC is Ken Postle @ phone 403.472.4519 (see <http://www.cement-process.com/index.htm>).
5. The concrete ready mix plant will be sourced through Canada based Cement Process Consulting, Ltd. The POC is Ken Postle @ phone 403.472.4519 (see <http://www.cement-process.com/index.htm>).
6. The fish production and processing equipment will be sourced through Colorado based Fisheries Technology Associates, Inc. The POC is Bill Mancini @ phone 970.225.0150 (see <http://www.ftai.com/>).

7. The enclosed photobioreactor consists of 2 miles long 12"Ø clear PVC pipe. A possible supplier is Harvel Plastics, Inc. but other sources will be considered prior to procurement (see <http://www.harvel.com/>).
  
8. The artificial lighting for the photobioreactor consists of 5 miles of high efficiency long lasting (10 years or more) light emitting diode (LED) lighting that will be wrapped barber pole fashion around the clear PVC pipe. A possible supplier is Light Waves Concept, Inc. but other sources will be considered prior to procurement (see <http://www.lightwavesconcept.com/>).
  
9. The power generation equipment will be sourced through UK based Combustion, Energy & Steam Specialists, Ltd. The POC is Mike Craigie @ phone +44 (0) 1856 851177 (see <http://www.cess.co.uk/>).
  
10. The seemingly high percentage of developer equity as technology is justified on the basis that it is the only economic development technology that simultaneously achieves:
  - 100% compliance with Kyoto Protocol thus helping to reverse global warming,
  - Distributed Biofuels (biodiesel and compressed natural gas or CNG) independence,
  - Distributed Food independence,
  - Distributed Renewable energy independence,
  - Distributed Water independence, and
  - Complete internal recycling of all byproducts and waste streams thereby producing a useful product—namely precast concrete products that will be used for constructing the project building itself as well as infrastructure roads, light rail transit surface transportation system, precast concrete potable water distribution system, precast concrete wastewater collection system, and precast concrete encased renewable energy power distribution system. In doing so the community initiative project will become the very first zero carbon and zero waste community in the world.

Climate Change has now become the most serious worldwide concern as the sustainability of our planet appears to be at rapidly increasing risk. Renewable Energy Technologies that address climate change are therefore in great demand. Technologies that address both climate change and substantial economic development are in even greater demand. The proposed waste-to-energy technology has required over 30,000 hours of research over a 10 year period to develop thus fully justifying the seemingly high percentage of developer equity as technology. It is the very first and only worldwide technology that is technically capable of simultaneous distributed energy independence, distributed food independence, distributed fuels independence, and distributed water independence with all in full compliance with Kyoto Protocol.

The proposed wastes-to-renewable energy technology consists of a suite of individual component technologies. The individual component technologies are:

- Biodiesel Production With Associated Waste Processing.** The National Renewable Energy Laboratory (NREL) pioneered the very first production of biodiesel from microalgae. The research and development was carried out under the “Aquatic Species Program” (ASP) that consisted of the first production of a biofuel called “algal biodiesel” (see [http://www1.eere.energy.gov/biomass/pdfs/biodiesel\\_from\\_algae.pdf](http://www1.eere.energy.gov/biomass/pdfs/biodiesel_from_algae.pdf)). Under the referenced program Algal Biodiesel was produced through the growing of microalgae for their lipid content. The lipid content was then converted into biodiesel through chemical transesterification in the same manner that soybeans and other vegetable oils are now being converted into biodiesel. The ASP funding totaled \$25.05 million over a 20 year period that began in 1978. Continuation funding was ultimately terminated when it was officially determined that algal biodiesel could not be produced economically. The ASP obtained its research data from growing microalgae in warm open ponds (Salton Sea in Southern California) at a pH of 8.2 using atmospheric carbon dioxide. The Salton Sea is the recipient of agricultural runoff nutrients as well as additional nutrients contained in municipal sewage treatment plants discharges. The Middle Cordoba Province Project will produce microalgae within an enclosed photobioreactor that will operate at the optimum growing temperature of 35°C (95°F) and at the optimum growing pH of 9.4. Photosynthesis will occur 24/7 rather than just during daylight hours by using long lasting light emitting diode (LED) lighting. The photobioreactor will receive the total carbon dioxide output from both the anaerobic digester as well as the power generation equipment thus substantially increasing production over that obtainable from using carbon dioxide from the atmosphere. Microalgae production will be further increased by adding the micronutrients contained in the reverse osmosis concentrate stream thus substantially improving microalgae production. The total increase of these process modifications over that obtained by the National Renewable Energy Laboratory’s ASP is estimated at a factor of at least 1000 to 1. By producing the microalgae within an enclosed photobioreactor the technology becomes totally compliant with Kyoto Protocol since all discharges of greenhouse gases to the environment are eliminated.
- Cement manufacturing as a technology has been practiced for many hundreds of years throughout the entire civilized world.**
- Fish farming was first practiced by the Chinese over 100 years ago. Due to the over fishing of the oceans fish farming is now widespread throughout the entire civilized world.**
- Precast concrete panels and piping have been manufactured for the last 50 years. The use of precast concrete panels has become quite popular in the building industry during the last 10 years.**
- Liquefied Nitrogen and Liquefied Oxygen have been produced in the marketplace for the last 50 years. Names of today’s largest industrial suppliers consist of Air Liquide, Air Products & Chemicals, Inc., Cryogenic Industries, Inc., Gas Systems Corporation, and Praxair, Inc.**
- Methane gas-to-methanol alcohol through synthesis gas (syngas) technology represents the standard method of producing methanol throughout the civilized world.**
- Microalgae production through the use of a photobioreactor (use of artificial light rather than sunlight) is now being done at several research institutions. The technology has yet to be put into full scale commercial operation.**

- The anaerobic digestion of municipal solid wastes (MSW) was first accomplished by two-phase anaerobic digestion in 1996 (see <http://lib.kier.re.kr/caddet/retb/no66.pdf>). More recently the management of municipal solids wastes is being accomplished using conventional anaerobic digestion by Waste Management, Inc., a waste management company (see <http://www.wm.com/WM/environmental/Bioreactor/technologies.asp>).
- Pig farming and processing has been practiced around the world for the last 100 years.
- Precast concrete panels and precast concrete pipes have been manufactured for the last 50 years throughout the world.
- Renewable energy power generation has been practiced for at least 30 years in the EU and 20 years in the United States.
- Reverse osmosis treatment has been around on a commercial basis for over 30 years. During the last 5 years its marketplace costs have been halved and it is now considered very good and very affordable technology.

Sultanate of Oman Prefeasibility Study, November 3, 2007	Totals
Location: Oman	
Technology Provider: WaterSmart Environmental, Inc.	
Project Developer: West Industries network SA POC: M. Idrissa Sall Phones: +221 465 18 18, +221 824 53 56, +221 954 60 70 Fax: 00 338 26 33 60 30 email: Winsa_Africa@yahoo.fr	
Project Type: Economic Development through Design-Build-Own-Operate BioWastes-To-Renewable Energy, BioFuels, Organic Foods, and Potable Water Independence	
Project Dollar Size: US\$500 million for each 1 km x 1 km x 3 story high project building	
Number of project buildings required: 60	
Project Activities: Extensive Agricultural Production and Processing that additionally includes renewable energy, biofuels, and water production along with 100% recycling of all byproducts into precast concrete panels and piping for infrastructure development	
Jobs Creations Potential for each 1 km x 1 km x 3 story high project building: 1,500	
BioWastes Treated: Municipal Solid Wastes (MSW), Medical Wastes, Construction & Demolition Wastes, Foods Production & Processing Wastes, and Biodiesel Processing Wastes	
Local Population Served for each 1 km x 1 km x 3 story high project building: 50,000	
Residual Wastes to Landfill: Zero	
Greenhouse Gaseous Emissions to the Environment: Zero	
Climate Change Carbon Footprint: Zero	
Investor Internal Rate of Return: Optimal	
<h2 style="color: green;">Detailed Project Description</h2> <p>Extensive Agricultural Production in each project building will consist of a 10,000 sow farrow-to-finish operation that is sized to produce excess local marketplace demand for finished pork and a 50 hectare tilapia fish farming operation that is also sized to produce excess local marketplace demand for tilapia fish. On a total processed weight basis the amount of excess processed fish produced will be about 4 times that of processed pork. Processed Tilapia fish are worth about 1.5 times as much as processed pork and therefore more profitable. The excess processed pork and processed fish will be exported to distant markets to provide visible cash flow to the project. The worldwide demand for pork on a weight basis is about 4 times that of the worldwide demand for fish. With a world population approaching 7 billion the pork and fish output of a single project building calculates out to approximately 0.075% of worldwide demand of processed pork and tilapia fish. A total of <math>1 \div 0.00075 = 1,333</math> project buildings would therefore be required to satisfy worldwide demand for both pork and fish. Worldwide consumption of pork and fish data is attached. The marketing idea is to produce 100% of the local demand for pork and fish with the entire excess of each sold to export markets for visible sales revenue.</p> <p>In addition to agricultural production, each project building will produce Portland cement for the purpose of manufacturing precast concrete panels and piping for direct infrastructure development.</p> <ol style="list-style-type: none"> <li>1. In the production of cement considerable carbon dioxide gas is produced.</li> <li>2. When processing biowastes using anaerobic digestion both methane gas and carbon dioxide gas are produced.</li> <li>3. When generating renewable energy both water vapor and carbon dioxide gas are produced.</li> </ol> <p>100% of the carbon dioxide gas produced during the production of cement, the</p>	

processing of biowastes, and the generation of electricity will be routed to an enclosed photobioreactor for the purpose of producing Spirulina microalgae. 75% of the Spirulina microalgae will be used as animal feed in the production of tilapia fish and pork. The remainder 25% will be converted into biodiesel biofuel (B100) and sold locally to produce visible sales revenue.

Spirulina microalgae contain about 6% lipids (fats). The production of biodiesel produces about 6% lipid (fat) conversion into biodiesel biofuel from Spirulina microalgae. The 94% remaining biowastes are returned to the anaerobic digester to produce additional methane gas and carbon dioxide gas. The resulting methane gas produced can be used for power generation or sold as a biofuel. The resulting carbon dioxide gas produced from electricity generation will be automatically routed to the enclosed photobioreactor to enable production of additional Spirulina microalgae.

The economic development objective is to produce 100% of the local demand for electricity, 100% of the local demand for biodiesel biofuel, 100% of the local demand for natural gas (methane gas is a near equivalent to natural gas) biofuel, and 100% of the local demand for compressed natural gas (CNG) automotive biofuel. Biodiesel (B100) can be used as a direct replacement for petroleum diesel without equipment modification. CNG biofuel must be used in vehicles equipped for this fuel. Each project building will engage in the modification of gasoline automotive equipment to enable the use of CNG biofuel. Automobiles that operate on CNG biofuel enjoy extended useful life of the engine by a factor of 4 or more. Trucks that operate on biodiesel biofuel enjoy extended useful life of the engine by a factor of 2 or more. Each economic development project includes the infrastructure for local distribution of renewable natural gas. To the extent that methane gas is used for electricity generation, the production of biodiesel biofuel, and the production of CNG biofuel, each qualifies for renewable energy credits since all such uses are carbon neutral.

As background information, the production of ethanol from corn and biodiesel from beans has precipitated a massive food or fuel issue throughout the world causing the marketplace price of both corn and soybeans to increase dramatically. These increases have, in turn, caused the marketplace price of ethanol and biodiesel to increase as well the marketplace price of corn and soybean based food products. It is these increases in marketplace prices that have caused the food or fuel issue. With our business model, the production of biodiesel from Spirulina microalgae stays completely clear of the food or fuel issue as does the production of CNG biofuel from biowastes. To achieve total sales of the biofuels production outputs they will be sold at a 20% discount from existing retail. At this attractive pricing 100% of routine production will easily sell in the marketplace.

Because nutrients will be 100% recycled internally, each project building will produce substantial liquid fertilizer concentrate that will be distributed to area farmers in need on a no-charge basis. Excess liquid fertilizer, if any, would be eligible to sell to distant markets or possibly converted into value added products. To the extent that the local market does not make use of the liquid fertilizer concentrate the fertilizer product will be sold to international markets to increase additional visible cash flow to the project.

Because 100% of the water is recycled internally, potable water of the quality of bottled water will be distributed locally on a no-charge basis. Because water is required to process municipal solid wastes each project building will accept both sanitary wastewater and storm water for that purpose on a no-charge basis. Over time, additional stories will be added to each project building to enable additional agricultural activities that could include bananas, beets, black bass, beef cattle, beans, cassava, coffee, corn, cotton, dairies, lobster, onions, poultry, prawns, rice, shrimp, sugar cane, sweet potatoes, trout, and many other crops.

Throughout the prefeasibility study extensive efforts are made to provide balanced chemical equations and mathematical calculations, where appropriate, to permit extensive due diligence evaluations of the proposed sciences to be used.

No Charge For Potable Water

No Charge For Wastewater Treatment

No Charge for Stormwater Treatment

## Marketplace BioWastes-To-Energy Feedstocks

A determination of the amount of volatile solids (VS) is necessary in order to calculate the amount of methane gas that can be produced from the anaerobic digestion of biowastes. Eligible feedstocks consist of municipal solid wastes (MSW), medical wastes, and construction & demolition wastes. For the purpose of arriving at conservative waste figure availability, a total of 2 lbs/person/day will be used for the purpose of calculating total feedstock biowaste amounts for developing countries and a total of 5 lbs/person/day will be used for the purpose of calculating total feedstock biowaste amounts for developed countries. For an area population of 50,000 for each project building the available biowastes calculate out to  $50,000 \times 2 \text{ lbs/person/Day} = 100,000 \text{ lbs/day}$ , or when divided by  $2,000 \text{ lbs/Ton} = 50 \text{ Tons/Day}$  for developing countries and  $50,000 \times 5 \text{ lbs/person/day} = 250,000 \text{ lbs/Day}$ , or when divided by  $2,000 \text{ lbs/Ton} = 125 \text{ Tons/Day}$  for developed countries.

For undeveloped countries, the calculation for municipal solid wastes is as follows:

Assuming 25% moisture content  $50 \text{ Tons/Day} \times 75\% = 37.5 \text{ Dry Tons/Day}$   
 Assuming 80% organic content  $37.5 \text{ Dry Tons/Day} \times 80\% = 30 \text{ Organic Tons/Day}$   
 Assuming 80% volatile solids content  $30 \text{ Organic Tons/Day} \times 80\% = 24 \text{ Tons Volatile Solids/Day}$  or  $\times 2,000 \text{ lbs/Ton} = 48,000 \text{ lbs/Day}$ . This amount of waste translates into  $48,000 \text{ lbs Volatile Solids/Day} \times 12 \text{ cubic feet of methane/lb Volatile Solids} = 576,000 \text{ CFD of CH}_4$ . At  $24 \text{ cubic feet/lb}$ , the methane production translates into  $576,000 \text{ CFD CH}_4 / 24 = 24,000 \text{ lbs/2,000} = 12.0 \text{ Tons CH}_4/\text{Day}$  for undeveloped countries.

For developed countries, the calculation for municipal solid wastes is as follows:

Assuming 25% moisture content  $125 \text{ Tons/Day} \times 75\% = 93.75 \text{ Dry Tons/Day}$   
 Assuming 80% organic content  $93.75 \text{ Dry Tons/Day} \times 80\% = 75 \text{ Organic Tons/Day}$   
 Assuming 80% volatile solids content  $75 \text{ Organic Tons/Day} \times 80\% = 60 \text{ Tons Volatile Solids/Day}$  or  $\times 2,000 \text{ lbs/Ton} = 120,000 \text{ lbs/Day}$ . This amount of waste translates into  $120,000 \text{ lbs Volatile Solids/Day} \times 12 \text{ cubic feet of methane/lb Volatile Solids} = 1,440,000 \text{ CFD of CH}_4$ . At  $24 \text{ cubic feet/lb}$ , the methane production translates into  $1,440,000 \text{ CFD CH}_4 / 24 = 60,000 \text{ lbs/2,000} = 30.0 \text{ Tons CH}_4/\text{Day}$  for developed countries.

In addition to fresh municipal solid wastes, the project will directly collect an additional 10 lbs/person/Day from existing landfills, rubbish piles, and dumps for the twofold purpose of producing additional methane gas and reclaiming additional ferrous and nonferrous metals while getting rid of existing dump/landfill sites. This activity will increase the methane gas and carbon dioxide gas production from two-phase anaerobic digestion by a factor of 5/2 or 2.5 thus increasing the volatile solids from undeveloped countries from 24 Tons/Day to 60 Tons/Day and from developed countries from 60 Tons to 150 Tons/Day. The associated methane gas is increased from 12 Tons CH<sub>4</sub>/Day to 30 Tons CH<sub>4</sub>/Day for undeveloped countries and from 30 Tons CH<sub>4</sub>/Day to 75 Tons CH<sub>4</sub>/Day from developed countries.

The 60 Tons Volatile Solids/Day from undeveloped countries can be converted into CO<sub>2</sub> production by multiplying the Volatile Solids by 12 to determine cu. ft. of methane gas produced.  $\text{Cu. ft. of methane gas produced} \div 24 \text{ cu. ft./lb} = \text{lbs methane gas}$ .  $\text{Lbs. methane gas multiplied by } 1.375 = \text{lbs CO}_2 \text{ produced}$  or  $60 \text{ Tons VS/Day} \times 2,000 \text{ lbs/Ton} \times 12 = 1,440,000 \text{ cu. ft. CH}_4/\text{Day}$ .  $1,440,000 \text{ cu. ft.} \div 24 \text{ cu. ft./lb} = 60,000 \text{ lbs CH}_4/\text{Day}$ .  $60,000 \text{ lbs CH}_4/\text{Day} \times 1.375 = 82,500 \text{ lbs CO}_2/\text{Day}$ .  $82,500 \text{ lbs CO}_2/\text{Day} \div 2,000 \text{ lbs/Ton} = 41.3 \text{ Tons CO}_2/\text{Day}$ .

The 150 Tons Volatile Solids/Day from undeveloped countries can be converted into CO<sub>2</sub> production by multiplying the Volatile Solids by 12 to determine cu. ft. of methane gas

60 Tons VS/Day  
From MSW  
Undeveloped  
Countries

30 Tons CH<sub>4</sub>/Day  
From MSW  
Undeveloped  
Countries

150 Tons VS/Day  
From MSW in  
Developed Countries

75 Tons CH<sub>4</sub>/Day  
From MSW in  
Developed Countries

No charge for  
MSW disposal

US\$0.00/Day  
From MSW

<p>produced. Cu. ft. of methane gas produced ÷ 24 cu. ft./lb = lbs methane gas. Lbs. methane gas multiplied by 1.375 = lbs CO<sub>2</sub> produced or 150 Tons VS/Day x 2,000 lbs/Ton x 12 = 3,600,000 cu. ft. CH<sub>4</sub>/Day. 3,600,000 cu. ft. ÷ 24 cu. ft./lb = 150,000 lbs CH<sub>4</sub>/Day. 150,000 lbs CH<sub>4</sub>/Day x 1.375 = 206,250 lbs CO<sub>2</sub>/Day. 206,250 lbs CO<sub>2</sub>/Day ÷ 2,000 lbs/Ton = 103 Tons CO<sub>2</sub>/Day.</p> <p>Revenue collected for management of landfill wastes, municipal solid wastes, medical wastes, and construction &amp; demolition wastes: US\$0/Day/Ton. Never a charge, ever. This service always provided as a public service activity only.</p>	
<p style="text-align: center;"><b>Agricultural Food Production and Processing</b></p> <p>A 10,000 Sow Farrow-To-Finish farming operation will be provided for each project building that will produce about 22 pigs/sow/year. There is a potential to increase the number of pigs since the Dutch are now reporting upwards of 30 pigs/sow/year. The 10,000 sows therefore translate into 22 x 10,000 = 220,000 pigs/year with possible future expansion possible. At a midterm weight of 100 lbs, each hog will generate wastes sufficient to produce 3.02891 cubic feet of methane gas per day (archived data from Premium Standard Farms, Kansas City) through anaerobic digestion for a total daily production of 3.02891 x 220,000 or 666,360 cubic feet. At 24 cubic foot/lb, the methane production translates into 666,360/24 = 27,765 lbs/2,000 = 13.9 Tons CH<sub>4</sub>/Day.</p> <p>Pigs usually reach market weight between 5 and 6 months of age at approximately 260 to 280 pounds. During this time, the pigs are often fed several corn-soybean meal based diets that change in nutrient composition to meet their needs. Pigs weigh about 3 pounds at birth and stay with the sow until 21 days of age. At this time, they are placed on a grain diet. Pigs have unlimited access to feed and water at all times. Pigs will eat about 1 pound of feed per day at weaning and as much as 8 pounds of feed per day by market weight. Water intake is about 1 gallon per day up to 5 or 6 gallons per day by market weight. Just weaned pigs (21 days of age) need to be kept at about 80 to 85 degrees Fahrenheit and by market weight 65° F. Therefore, heating and cooling systems need to be in place throughout. A total of 2 MW of electricity will be required for the pig farming operations.</p> <p>For market hogs the pigs will consume about 3 to 4 percent of their body weight. A 200-pound hog will consume about 6 to 6.5 pounds each day.</p> <ul style="list-style-type: none"> <li>• Nursery pigs weighing about 10 pounds consume around 0.5 pounds</li> <li>• Feeder pigs weighing about 50 pounds consume around 1 to 2 pounds</li> <li>• Grower pigs (now referred to as hogs) weighing about 100 pounds consume around 3 to 4 pounds</li> <li>• Finisher hogs weighing about 150 pounds consume around 4 to 5 pounds</li> <li>• Hogs more than 200 pounds consume around 6 to 7 pounds</li> </ul> <p>United States retail pork prices are currently around US\$2.87/lb. The wholesale producer receives about 43% of this price or US\$1.46/lb. The above prices represent the average for the last 3 years. As a commodity there is no guarantee they will drift up or down but will likely continue to fluctuate as they have been for the last 50 years. Current marketplace dressed pork yields are over 2,750 lbs/year/sow. A 10,000 sow farrow-to-finish operation is estimated to produce 27,500,000 lbs of dressed pork/year or an average of 75,342 lbs/Day. At US\$1.46/lb the daily revenue is estimated at US\$110,000.00. Associated electricity requirements for temperature and humidity control are estimated at 2 MW. The exported pork product will be the first Organic Pork produced worldwide since all the principles for its production will be followed. Organic food is produced according to a set of principles and standards concerning such issues as pesticides, additives, animal welfare (medications) and sustainability. Organic pork will carry a higher</p>	<p style="text-align: right;">27.0 Tons VS/Day From Pig Farming</p> <p style="text-align: right;">13.9 Tons CH<sub>4</sub>/Day From Pig Farming</p> <p style="text-align: right;">2 MW Electricity Required</p> <p style="text-align: right;">US\$110,000/Day From Pork</p>

<p>marketplace value than non-organically produced pork similar to all organically produced food products.</p> <p>In terms of investor risk assessment, the existence of the very large pork commodity market is regarded as ample proof of probable visible cash flow from this specific food product.</p> <p>At a finished market weight of 250 lbs 220,000 pigs translate into 220,000 x 250 lbs = 55,000,000 lbs/year. <math>55,000,000 \text{ lbs/year} \div 2,000 \text{ lbs/Ton} = 27,500 \text{ Tons/year}</math>. <math>27,500 \text{ Tons/year} \div 365 \text{ days/year} = 75.34 \text{ Tons/Day}</math>.</p> <p>The processing of pork yields about 30% biowastes. The total processing wastes calculate out at <math>75.34 \text{ Tons/Day} \times 30\% = 22.60 \text{ Tons/Day}</math>. When multiplied by 2,000 lbs/Ton, the amount of volatile solids = 45,200 lbs/Day. This amount of biowastes translate into <math>45,200 \text{ lbs Volatile Solids/Day} \times 12 \text{ cubic feet of methane gas/lb Volatile Solids} = 542,400 \text{ cubic feet/Day (CFD) of methane gas (CH}_4\text{)}</math>. At 24 cubic feet/lb, the methane production translates into <math>542,400 \text{ CFD CH}_4/24 = 22,600 \text{ lbs/2,000} = 11.3 \text{ Tons CH}_4\text{/Day}</math>.</p>	<p>22.6 Tons VS/Day From Pork Processing</p> <p>11.30 Tons CH<sub>4</sub>/Day From Pork Processing</p>
<p style="text-align: center;"><b>Additional Agricultural Food Production and Processing</b></p> <p>Will consist of a 50 hectare Tilapia fish farm at each project building for producing and thereafter processing organically grown Tilapia filets, mostly for the export fish market. Electricity requirements are estimated at 0.5 MW. The estimated raw fish produced per day is 670,000 lbs. At a filet yield of 42% a total of 281,000 lbs (140.5 Tons of Tilapia filets) will be produced/Day along with 389,000 lbs or when divided by 2,000 lbs/Ton = 194.5 Tons of biowastes/Day. At a commodity sell price of US\$2.18/lb, the daily revenue is estimated at <math>140.5 \text{ Tons/Day} \times 2,000 \text{ lbs/Ton} \times \text{US}\\$2.18/\text{lb} = \text{US}\\$612,580/\text{Day}</math></p> <p>It is virtually impossible to obtain a buyer commitment on a current basis in the form of a purchase agreement for a product that is 36 months away from coming into existence. In terms of investor risk assessment, the existence of the very large fish commodity market itself is regarded as ample proof of probable visible cash flow from this specific food product.</p> <p>The 194.5 Tons/Day of biowastes x 2,000 lbs/Ton = 389,000 lbs of Volatile Solids/Day. This amount of waste translates into <math>389,000 \text{ lbs Volatile Solids/Day} \times 12 \text{ cubic feet of methane/lb Volatile Solids} = 4,668,000 \text{ cubic feet/Day (CFD) of CH}_4</math>. At 24 cubic foot/lb, the methane production translates into <math>4,668,000 \text{ CFD CH}_4/24 = 194,500 \text{ lbs/2,000} = 97.3 \text{ Tons CH}_4\text{/Day}</math>.</p>	<p>0.5 MW Electricity Required For Tilapia Fish Farming</p> <p>US\$612,580/Day From Tilapia Fish</p> <p>194.5 Tons VS/Day From Fish Processing</p> <p>97.3 Tons CH<sub>4</sub>/Day From Fish Processing</p>
<p><b>Subtotal Carbon Dioxide Gas Produced From Municipal Solid Wastes Processing:</b></p>	<p>41.3 Tons CO<sub>2</sub>/Day</p>
<p>The 60 Tons Volatile Solids/Day from Municipal Solid Wastes can be converted into CO<sub>2</sub> production by multiplying the Volatile Solids by 12 to determine cu. ft. of methane gas produced. Cu. ft. of methane gas produced <math>\div 24 \text{ cu. ft./lb} = \text{lbs methane gas}</math>. Lbs. methane gas multiplied by 1.375 = lbs CO<sub>2</sub> produced or <math>60 \text{ Tons VS/Day} \times 2,000 \text{ lbs/Ton} \times 12 = 1,440,000 \text{ cu. ft. CH}_4\text{/Day}</math>. <math>1,440,000 \text{ cu. ft.} \div 24 \text{ cu. ft./lb} = 60,000 \text{ lbs CH}_4\text{/Day}</math>. <math>60,000 \text{ lbs CH}_4\text{/Day} \times 1.375 = 82,500 \text{ lbs CO}_2\text{/Day}</math>. <math>82,500 \text{ lbs CO}_2\text{/Day} \div 2,000 \text{ lbs/Ton} = 41.3 \text{ Tons CO}_2\text{/Day}</math>.</p>	
<p><b>Subtotal Feedstocks Volatile Solids From Pig Farming Wastes:</b></p>	<p>27.0 Tons VS/Day</p>
<p>The 27 Tons Volatile Solids/Day from Pig Farming Wastes can be converted into CO<sub>2</sub> production by multiplying the Volatile Solids by 12 to determine cu. ft. of methane gas produced. Cu. ft. of methane gas produced <math>\div 24 \text{ cu. ft./lb} = \text{lbs methane gas}</math>. Lbs. methane gas multiplied by 1.375 = lbs CO<sub>2</sub> produced or <math>27 \text{ Tons VS/Day} \times 2,000 \text{ lbs/Ton} \times 12 = 648,000 \text{ cu. ft. CH}_4\text{/Day}</math>. <math>648,000 \text{ cu. ft.} \div 24 \text{ cu. ft./lb} = 27,000 \text{ lbs CH}_4\text{/Day}</math>. <math>27,000 \text{ lbs CH}_4\text{/Day} \times 1.375 = 37,125 \text{ lbs CO}_2\text{/Day}</math>. <math>37,125 \text{ lbs CO}_2\text{/Day} \div 2,000 \text{ lbs/Ton} = 18.6 \text{ Tons CO}_2\text{/Day}</math>.</p>	<p>18.6 Tons CO<sub>2</sub>/Day From Pig Farming Wastes</p>

<b>Subtotal Feedstocks Volatile Solids From Pork Processing Wastes:</b>	<b>22.6 Tons/Day</b>
The 22.6 Tons Volatile Solids/Day from Pork Processing Wastes can be converted into CO <sub>2</sub> production by multiplying the Volatile Solids by 12 to determine cu. ft. of methane gas produced. Cu. ft. of methane gas produced ÷ 24 cu. ft./lb = lbs methane gas. Lbs. methane gas multiplied by 1.375 = lbs CO <sub>2</sub> produced or 22.6 Tons VS/Day x 2,000 lbs/Ton x 12 = 542,400 cu. ft. CH <sub>4</sub> /Day. 542,400 cu. ft. ÷ 24 cu. ft./lb = 22,600 lbs CH <sub>4</sub> /Day. 22,600 lbs CH <sub>4</sub> /Day x 1.375 = 31,075 lbs CO <sub>2</sub> /Day. 31,075 lbs CO <sub>2</sub> /Day ÷ 2,000 lbs/Ton = 15.5 Tons CO <sub>2</sub> /Day.	<b>15.5 Tons CO<sub>2</sub>/Day From Pork Processing Wastes</b>
<b>Subtotal Feedstocks Volatile Solids From Tilapia Fish Farming Wastes:</b>	<b>1.4 Tons/Day</b>
The 1.4 Tons Volatile Solids/Day from Tilapia Fish Farming Wastes can be converted into CO <sub>2</sub> production by multiplying the Volatile Solids by 12 to determine cu. ft. of methane gas produced. Cu. ft. of methane gas produced ÷ 24 cu. ft./lb = lbs methane gas. Lbs. methane gas multiplied by 1.375 = lbs CO <sub>2</sub> produced or 1.4 Tons VS/Day x 2,000 lbs/Ton x 12 = 33,600 cu. ft. CH <sub>4</sub> /Day. 33,600 cu. ft. ÷ 24 cu. ft./lb = 1,400 lbs CH <sub>4</sub> /Day. 1,400 lbs CH <sub>4</sub> /Day x 1.375 = 1,925 lbs CO <sub>2</sub> /Day. 1,925 lbs CO <sub>2</sub> /Day ÷ 2,000 lbs/Ton = 0.96 Tons CO <sub>2</sub> /Day.	<b>0.96 Tons CO<sub>2</sub>/Day From Tilapia Fish Farming Wastes</b>
<b>Subtotal Feedstocks Volatile Solids From Tilapia Fish Processing Wastes:</b>	<b>194.5 Tons/Day</b>
The 194.5 Tons Volatile Solids/Day from Tilapia Fish Processing Wastes can be converted into CO <sub>2</sub> production by multiplying the Volatile Solids by 12 to determine cu. ft. of methane gas produced. Cu. ft. of methane gas produced ÷ 24 cu. ft./lb = lbs methane gas. Lbs. methane gas multiplied by 1.375 = lbs CO <sub>2</sub> produced or 194.5 Tons VS/Day x 2,000 lbs/Ton x 12 = 4,668,000 cu. ft. CH <sub>4</sub> /Day. 4,668,000 cu. ft. ÷ 24 cu. ft./lb = 194,500 lbs CH <sub>4</sub> /Day. 194,500 lbs CH <sub>4</sub> /Day x 1.375 = 267,437 lbs CO <sub>2</sub> /Day. 267,437 lbs CO <sub>2</sub> /Day ÷ 2,000 lbs/Ton = 133.7 Tons CO <sub>2</sub> /Day.	<b>133.7 Tons CO<sub>2</sub>/Day From Tilapia Fish Processing Wastes</b>
<b>Subtotal Carbon Dioxide Gas Produced From Pig Farming Wastes:</b>	<b>18.6 Tons CO<sub>2</sub>/Day</b>
<b>Subtotal Carbon Dioxide Gas Produced From Pork Processing Wastes:</b>	<b>15.5 Tons CO<sub>2</sub>/Day</b>
<b>Subtotal Carbon Dioxide Gas Produced From Tilapia Fish Farming Wastes:</b>	<b>0.96 Tons CO<sub>2</sub>/Day</b>
<b>Subtotal Carbon Dioxide Gas Produced From Tilapia Fish Processing Wastes:</b>	<b>133.7 Tons CO<sub>2</sub>/Day</b>
<b>Subtotal Carbon Dioxide Gas Produced From Electricity Generation:</b>	<b>247.0 Tons CO<sub>2</sub>/Day</b>
<b>Subtotal Carbon Dioxide Gas Produced From Cement Manufacturing:</b>	<b>67.2 Tons CO<sub>2</sub>/Day</b>
<b>Total Carbon Dioxide Gas Produced:</b>	<b>483.0 Tons CO<sub>2</sub>/Day</b>
<b>Subtotal Methane Gas Produced From Municipal Solid Wastes:</b>	<b>30.0 Tons CH<sub>4</sub>/Day</b>
<b>Subtotal Methane Gas Produced From Pig Farming Wastes:</b>	<b>13.5 Tons CH<sub>4</sub>/Day</b>
<b>Subtotal Methane Gas Produced From Pork Processing Wastes:</b>	<b>11.3 Tons CH<sub>4</sub>/Day</b>
<b>Subtotal Methane Gas Produced From Tilapia Fish Farming Wastes:</b>	<b>0.7 Tons CH<sub>4</sub>/Day</b>
<b>Subtotal Methane Gas Produced From Tilapia Processing Wastes:</b>	<b>97.3 Tons CH<sub>4</sub>/Day</b>
<b>Subtotal Methane Gas Produced From Biodiesel Processing Wastes:</b>	<b>97.1 Tons CH<sub>4</sub>/Day</b>
<b>Total Methane Gas Produced:</b>	<b>249.9 Tons CH<sub>4</sub>/Day</b>
<p style="text-align: center;"><b>Two-Phase Anaerobic Digestion</b></p> <p>All of the wastes associated with agricultural production will be managed through two-phase anaerobic digestion technology. Traditional anaerobic digestion (often referred to as conventional high rate anaerobic digestion) produces a biogas that consists of 1/3 carbon dioxide gas by volume and 2/3 methane gas by volume as a common gas mixture. Two-phase anaerobic digestion, however, produces the same gases as two distinct gases consisting individually of carbon dioxide gas and methane gas. The separation of the two gases permits each to be managed individually.</p> <p>In every anaerobic digester the ratio of carbon dioxide gas produced relative to methane gas is 1:2 on a volumetric basis. The molecular weight of methane gas (CH<sub>4</sub>) is 16 (12 for Carbon + 4 for Hydrogen) whereas the molecular weight of carbon dioxide gas (CO<sub>2</sub>) is 44 (12 for Carbon and 32 for Oxygen). 1 x 44 = 44 weight units for carbon dioxide gas and 2 x 16 = 32 weight units for methane gas. 44 divided by 32 = 1.375. Carbon dioxide produced relative to methane produced is therefore 137.5% on a mass basis. The actual weight of methane gas produced may be found by multiplying its cubic feet by the factor 0.0423</p>	<p style="text-align: center;"><b>Products Of Two-Phase Anaerobic Digestion</b></p> <p><b>Volatile Solids (VS)</b> x 12 = cu. ft. CH<sub>4</sub></p> <p>cu. ft. CH<sub>4</sub> x 0.0423 = lbs CH<sub>4</sub></p> <p>lbs CH<sub>4</sub> x 1.375 = lbs CO<sub>2</sub></p>

lbs/cu. ft. to arrive at its actual weight in lbs. This weight may be multiplied by the factor of 1.375 (137.5%) to arrive at the corresponding weight of carbon dioxide produced in lbs. The amount of methane gas generated through two-phase anaerobic digestion may be found by multiplying the volatile solids weight of the biowastes in lbs by 12 to arrive at the cubic feet of methane gas produced in lbs.

Other sometimes handy mathematical relationships are:

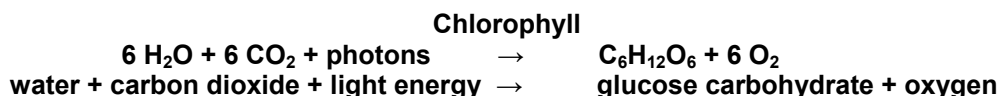
- 1 Ton VS/Day produces 24,000 CH<sub>4</sub>/Day from two-phase anaerobic digestion
- 1 Ton VS/Day produces 0.508 Tons CH<sub>4</sub>/Day from two-phase anaerobic digestion
- 1 Ton VS/Day produces 0.698 Tons CO<sub>2</sub>/Day from two-phase anaerobic digestion
- 1 Ton CH<sub>4</sub>/Day used for electricity generation produces 2.75 Tons CO<sub>2</sub>/Day
- 83,780 CH<sub>4</sub>/Day produces 1 MW of simple cycle electricity power generation

## Enclosed Photobioreactor for Spirulina Microalgae Production

The enclosed photobioreactor consists of a 2,200,000 foot long 12"Ø clear schedule 40 PVC pipe spiral wrapped externally with ultra high efficiency long lasting (10 years +) light emitting diode lighting for continuous photosynthesis. A small portion of the Spirulina microalgae produced will be continuously recycled to the start of the photobioreactor to provide the required seed to enable continuous Spirulina microalgae production. Electricity requirements = 6.0 MW for the lighting and associated recirculation pumping equipment.

The photobioreactor will receive 100% of the carbon dioxide gas output of the two-phase anaerobic digester and 100% of the carbon dioxide gas output from electricity generation. In addition, it will receive 100% of the output of macronutrients from the reverse osmosis treatment equipment deployed downstream from the two-phase anaerobic digester. The Spirulina microalgae require both carbon dioxide and macronutrients to maximize their rate of growth. The photobioreactor will be operated at a temperature of 35°C (95°F) and a pH of 9.4 to further optimize Spirulina microalgae rate of growth. Please refer to attached WSE Drawing Nos. S-6099-1 and S-9900-1 for additional information.

Spirulina will be produced using photosynthesis in the same manner that has existed for billions of years in the oceans of the world. The photosynthesis reaction is:

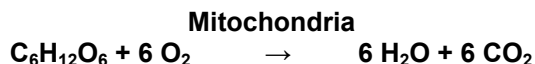


The chemical mass balance of the above equation becomes :



For each 264 grams of CO<sub>2</sub> reacted 180 grams of glucose carbohydrate and 192 grams of O<sub>2</sub> will be produced. For each ton of CO<sub>2</sub> reacted, 180/264 or 0.682 tons of glucose carbohydrates and 192/264 or 0.73 tons of O<sub>2</sub> will be produced. Glucose carbohydrates equate to Spirulina microalgae, a plant type material called phytoplankton.

Respiration occurs in the Mitochondria of cells. It is almost the exact opposite reaction to photosynthesis. These two reactions work together to maintain a biological balance on earth. The respiration reaction is:



One Ton CO<sub>2</sub>/Day  
 Produces 0.682 Tons  
 Of Glucose  
 Carbohydrates/Day  
 (Spirulina Microalgae)

<p>It is generally believed that photosynthesis occurs only during periods of sunlight (or artificial light) and that respiration occurs only during periods of darkness. Horticulture studies have established that several, but not all, species of plants can be grown under continuous lighting. The same studies have established that photosynthesis and respiration can and do occur simultaneously under continuous lighting conditions. Plants are multi-cell and capable of learned behavior whereas Spirulina microalgae are single cell plants and therefore totally incapable of acquiring learned behavior. Spirulina microalgae can therefore be grown under continuous lighting conditions even though they have never been exposed to continuous lighting conditions for billions of years. Continuous lighting therefore approximately doubles total Spirulina growth relative to day/night growth rates.</p> <p>The glucose produced during photosynthesis contains about 6% lipids (fats). Lipids are efficiently converted into biodiesel through a transesterification process. Each ton of CO<sub>2</sub> will simultaneously produce 0.68 tons glucose carbohydrates x 0.06 = 0.04 tons biodiesel and 1.0 – 0.04 = 0.96 tons of byproduct biowastes. 100% of the byproduct biowastes will consist of volatile solids. One ton CO<sub>2</sub>/Day can therefore produce 0.04 tons biodiesel/Day. At a specific gravity of 0.88 this is equivalent to 0.04 tons x 2,000 lbs/ton divided by 0.88 specific gravity = 90.91 gallons/day. The same one ton CO<sub>2</sub>/Day will produce 0.96 tons x 2,000 lbs/ton = 1,920 lbs volatile solids/day or 21.12 lbs volatile solids/gallon of biodiesel produced/day.</p>	<p>One Ton CO<sub>2</sub>/Day Produces 0.04 Tons Biodiesel/Day</p> <p>One Ton CO<sub>2</sub>/Day Produces 0.96 Tons Volatile Solids/Day</p> <p>One Ton CO<sub>2</sub>/Day Produces 90.91 Gallons Of Biodiesel/Day</p> <p>Each Gallon of Biodiesel Produced Produces 21.12 lbs of Volatile Solids</p>
<p style="text-align: center;"><b>Biodiesel Production</b></p> <p>All biodiesel produced will fully comply with American Society for Testing and Materials (ASTM) Standard Specification D 6751-03. The referenced specification is attached to the prefeasibility study.</p> <p>The amount of biodiesel produced is directly dependent on the amount of Spirulina microalgae produced. The amount of Spirulina microalgae produced is directly dependent on the amount of carbon dioxide gas that is added to the photobioreactor. Since carbon dioxide gas is produced by electricity generation, two-phase anaerobic digestion, and cement production, the total amount of CO<sub>2</sub> produced must be determined from each source.</p> <p>Source No. 1: Electricity Generation:</p> <p>30 MW of electricity will be produced for the community initiative. Another 21.5 MW of electricity will be used internally for the photobioreactor, air liquefaction, methane gas compression, tilapia fish lighting, pig production, and general building use. The total amount of electricity produced therefore equals 30 MW + 21.5 MW = 51.5 MW.</p> <p>When generating electricity CO<sub>2</sub> is produced according to the following combustion equation:</p> $\text{CH}_4 + 2\text{O}_2 + 7.52 \text{N}_2 \rightarrow \text{CO}_2 + 2\text{H}_2\text{O} + 7.52 \text{N}_2 + \text{heat}$ <p style="text-align: center;">methane + oxygen + nitrogen → carbon dioxide + water + nitrogen</p> <p>The chemical mass balance of the above equation becomes:</p> $16 \text{ gm CH}_4 + 64 \text{ gm O}_2 + 105 \text{ gm N}_2 \rightarrow 44 \text{ gm CO}_2 + 36 \text{ gm H}_2\text{O} + 105 \text{ gm N}_2$ <p style="text-align: center;">total of 80 gm reactants → total of 80 gm products</p> <p>Please note that nitrogen is not a reactant as it does not participate in the reaction. For each ton of CH<sub>4</sub> used for electricity generation a total of 44/16 or 2.75 tons of CO<sub>2</sub> will be produced along with a total of 36/16 or 2.25 tons of H<sub>2</sub>O. 2.25 tons of H<sub>2</sub>O is, in turn, equivalent to 2.25 tons H<sub>2</sub>O x 2,000 lbs/ton = 4,500 lbs ÷ 8.34 lbs/gallon = 540 gallons of</p>	<p>1 Ton CH<sub>4</sub> Produces 2.75 Tons CO<sub>2</sub> From Electricity Generation</p> <p>1 Ton CH<sub>4</sub> Produces 2.25 Tons H<sub>2</sub>O From Electricity Generation</p> <p>1 Ton CH<sub>4</sub> Produces 540 Gallons Of Water From Electricity Generation</p>

<p>water.</p> <p>If 51.5 MW of electricity is produced to provide energy independence within the Community Initiative, a total of 51.5 MW x 83,780 CH<sub>4</sub>/Day/MW = 4,314,670 cubic feet of methane gas will have to be used each day. At 24 cubic foot/lb, the methane usage translates into 4,314,670 cu. ft. CH<sub>4</sub>/24 = 179,778 lbs/2,000 = 89.89 Tons CH<sub>4</sub>/Day. Since each ton of CH<sub>4</sub> produces 2.75 Tons of CO<sub>2</sub> the generation of 51.5 MW of electricity produces 89.89 x 2.75 = 247.0 Tons of CO<sub>2</sub>/Day due to the generation of electricity. Since each ton of CH<sub>4</sub> produces 2.25 Tons of H<sub>2</sub>O, the generation of 51.5 MW of electricity also produces 89.89 x 2.25 = 202 Tons of H<sub>2</sub>O/Day.</p>	<p>51.5 MW Of Electricity Produces 247.5 Tons Of CO<sub>2</sub>/Day</p>
<p><b>Source No. 2: Two-Phase Anaerobic Digestion:</b></p> <p>To determine the amount of CO<sub>2</sub> produced first requires a determination of the amount of CH<sub>4</sub> produced as CH<sub>4</sub> production directly determines CO<sub>2</sub> production by a factor of 1.375.</p>	<p>51.5 MW Of Electricity Produces 89.89 Tons Of CH<sub>4</sub>/Day</p>
<p>To determine the amount of CH<sub>4</sub> produced first requires the amount of volatile solids that are treated as each lb of volatile solids x 12 = cu. ft. CH<sub>4</sub> produced.</p> <p>The volatile solids available from MSW processing are 60.0 Tons/Day as listed above.  The volatile solids available from pig farming are 27.0 Tons/Day as listed above.  The volatile solids available from pork processing are 22.6 Tons/Day as listed above.  The volatile solids available from tilapia fish farming are 1.4 Tons/Day as listed above.  The volatile solids available from tilapia fish processing are 194.5 Tons/Day as listed above.  The total volatile solids available as listed above = 60.0 + 27.0 + 22.6 + 1.4 + 194.5 = 305.5 Tons CH<sub>4</sub>/Day. 305.5 Tons CH<sub>4</sub>/Day x 1.375 = 420.1 Tons CO<sub>2</sub>/Day.</p>	
<p>The project building will engage in the manufacturing of cement. Carbon dioxide is produced in cement making as a result of the production of a process ingredient called 'Clinker'. Clinker is made when limestone is heated to produce lime. Substantial amounts of carbon dioxide are simultaneously formed during this reaction. The final amount of carbon dioxide produced varies depending on the type of cement being made. Each project building will be manufacturing 300 Tons/Day of Portland type cement.</p>	
<p>According to the <i>Annual Review of Energy and the Environment</i>, (Vol. 26: pp 303-329, November 2001) average CO<sub>2</sub> emissions/Ton from cement production = 448 lbs. At a cement production rate of 300 Tons/Day the total carbon dioxide emissions = 300 Tons/Day x 448 lbs CO<sub>2</sub>/Ton = 134,400 lbs/Day ÷ 2,000 lbs/Ton = 67.2 Tons CO<sub>2</sub>/Day. Adding this amount of CO<sub>2</sub> to the above total of 420.1 Tons CO<sub>2</sub>/Day = 487.3 Tons CO<sub>2</sub>/Day that will be produced from electricity generation, two-phase anaerobic digestion of volatile solids feedstocks, and cement production.</p>	
<p>Since each ton of CO<sub>2</sub> produces 0.682 Tons of Spirulina microalgae 487.3 Tons CO<sub>2</sub>/Day produces 487.3 x 0.682 = 332.3 Tons Spirulina microalgae/Day.</p>	<p>332.3 Tons Spirulina Microalgae Produced/Day</p>
<p>75% or 249.2 Tons Spirulina/Day will be used for feeding tilapia fish and pigs. The remaining 25% or 83.1 Tons Spirulina/Day will be used in the production of biodiesel (B100). 83.1 Tons Spirulina production is the equivalent of 25% of 487.3 Tons CO<sub>2</sub>/Day or 121.8 Tons CO<sub>2</sub>/Day. 249.2 Tons Spirulina production is the equivalent of 75% of 487.3 Tons CO<sub>2</sub>/Day or 365.5 Tons CO<sub>2</sub>/Day.</p>	
<p>Since one ton CO<sub>2</sub>/Day produces 0.682 Tons of Spirulina microalgae, 108.3 Tons CO<sub>2</sub>/Day produces 108.3 x 0.682 = 73.86 additional tons of Spirulina microalgae increasing its production from 295.5 Tons/Day to 369.4 Tons/Day.</p>	<p>18,381 Gallons Of Biodiesel Produced/Day</p>
<p>Since one ton CO<sub>2</sub>/Day produces 0.04 tons biodiesel/day, 121.8 Tons CO<sub>2</sub>/Day produces 121.8 x 0.04 tons = 4.87 tons biodiesel/Day. At a specific gravity of 0.88 this is equivalent to 4.87 tons x 2,000 lbs/ton divided by 0.88 specific gravity = 11,073 gallons/day.</p>	<p>58.5 Tons CH<sub>4</sub>/Day plus  38.6 Tons CH<sub>4</sub>/Day = 97.1 Tons CH<sub>4</sub> Produced/Day From Biodiesel Production</p>

Since each gallon of biodiesel produced generates 21.12 lbs of volatile solids, 11,073 gallons x 21.12 = 233,856 lbs. Volatile Solids/Day. 233,856 lbs Volatile Solids/Day ÷ 2,000 lbs/Ton = 116.9 Tons Volatile Solids/Day. The 116.9 Tons Volatile Solids/Day from biodiesel production can be converted into CO<sub>2</sub> production by multiplying the Volatile Solids by 12 to determine cu. ft. of methane gas produced. Cu. ft. of methane gas produced ÷ 24 cu. ft./lb = lbs methane gas. Lbs. methane gas multiplied by 1.375 = lbs CO<sub>2</sub> produced or 116.9 Tons VS/Day x 2,000 lbs/Ton x 12 = 2,806,272 cu. ft. CH<sub>4</sub>/Day. 2,806,272 cu. ft. ÷ 24 cu. ft./lb = 116,928 lbs CH<sub>4</sub>/Day. 116,928 lbs CH<sub>4</sub>/Day x 1.375 = 160,776 lbs CO<sub>2</sub>/Day. 160,776 lbs CO<sub>2</sub>/Day ÷ 2,000 lbs/Ton = 80.4 Tons CO<sub>2</sub>/Day.

Since one ton CO<sub>2</sub>/Day produces 0.04 tons biodiesel/day, 80.4 Tons CO<sub>2</sub>/Day produces 80.4 x 0.04 tons = 3.22 tons biodiesel/Day. At a specific gravity of 0.88 this is equivalent to 3.22 tons x 2,000 lbs/ton divided by 0.88 specific gravity = 7,308 gallons biodiesel/day thus increasing biodiesel production from 11,073 GPD to 18,381 GPD.

Since the basic waste-to-energy process fully satisfies electricity demand the excess methane gas will be beneficially used for:

1. The production of methanol through syngas technology that is used as a required feedstock in the production of biodiesel biofuel,
2. The production and sale of compressed natural gas (CNG) biofuel surface transportation fuel, and
3. The production and sale of renewable natural gas biofuel to the marketplace.

### Pig and Tilapia Fish Feed Requirements:

The 10,000 sow operation will produce 75.34 Tons/Day of finished hogs. It takes about 1.2 lbs of feed to increase a pig's weight by 1.0 pound. The 75.34 Tons of finished hogs will require 75.34 x 1.2 or 90.41 Tons of feed per Day. The production of tilapia fish is 335 Tons/Day. It takes about 1.2 lbs of feed to increase the fish weight by 1.0 pound. The 335 Tons of finished fish will require 335 x 1.2 or 402 Tons of feed per Day. Combined feed requirements are 90.41 + 402 = 492.4 Tons feed/Day. Spirulina microalgae production at 332 Tons feed/Day will mostly satisfy pig and tilapia fish feed requirements. As the MSW volume increases the volume of Spirulina microalgae will automatically increase. It won't take much of an increase in MSW volume to fully satisfy total feed requirements.

If the percentage of Spirulina microalgae use is changed from 75%-25% to 90%-10% sufficient feed would be produced at the expense of reducing the production of biodiesel. The preferred initiative is to increase collection of MSW biowastes by excavating area landfills and dumps for the purpose of treating their contents with two-phase anaerobic digestion to increase the associated production of Spirulina microalgae. In so doing, the volume of biodiesel production could remain the same.

#### Subtotal Methane (CH<sub>4</sub>) Gas Production From Municipal Solid Wastes (MSW):

60 Tons/Day Total Volatile Solids x 2,000 lb/Ton x 12 Cubic Feet (CF)/lb = 1,440,000 cu. ft./Day. 1,440,000 cu. ft. CH<sub>4</sub>/Day ÷ 24 lbs/cu. ft. = 60,000 lbs. 60,000 lbs ÷ 2,000 lbs/Ton = 30 Tons CH<sub>4</sub>/Day

1,440,000 cu. ft.  
CH<sub>4</sub>/Day = 30 Tons  
CH<sub>4</sub>/Day From MSW

#### Subtotal Methane (CH<sub>4</sub>) Gas Production From Biodiesel Processing Wastes:

4,659,366 cu. ft. CH<sub>4</sub>/Day ÷ 24 cu. ft./lb = 194,140 lbs. 194,140 lbs ÷ 2,000 lbs/Ton = 97.1 Tons CH<sub>4</sub>/Day

97.1 Tons CH<sub>4</sub>/Day  
From Biodiesel  
Wastes

#### Subtotal Methane (CH<sub>4</sub>) Gas Production From Pig Farming Wastes:

27 Tons/Day Total Volatile Solids x 2,000 lb/Ton x 12 Cubic Feet (CF)/lb =

648,000 cu. ft.

	648,000 cu. ft./Day. 648,000 cu. ft. CH <sub>4</sub> /Day ÷ 24 lbs/cu. ft. = 27,000 lbs. 27,000 lbs ÷ 2,000 lbs/Ton = 13.5 Tons CH <sub>4</sub> /Day	CH <sub>4</sub> /Day = 13.5 Tons CH <sub>4</sub> /Day From Pig Farming Wastes
<b>Subtotal Methane (CH<sub>4</sub>) Gas Production From Pork Processing Wastes:</b>		
	22.6 Tons/Day Total Volatile Solids x 2,000 lb/Ton x 12 Cubic Feet (CF)/lb = 542,400 cu. ft./Day. 542,400 cu. ft. CH <sub>4</sub> /Day ÷ 24 lbs/cu. ft. = 22,600 lbs. 22,600 lbs ÷ 2,000 lbs/Ton = 11.3 Tons CH <sub>4</sub> /Day	542,400 cu. ft. CH <sub>4</sub> /Day = 11.3 Tons CH <sub>4</sub> /Day From Pork Processing Wastes
<b>Subtotal Methane (CH<sub>4</sub>) Gas Production From Tilapia Fish Farming Wastes:</b>		
	1.4 Tons/Day Total Volatile Solids x 2,000 lb/Ton x 12 Cubic Feet (CF)/lb = 33,600 cu. ft./Day. 33,600 cu. ft. CH <sub>4</sub> /Day ÷ 24 lbs/cu. ft. = 1,400 lbs. 1,400 lbs ÷ 2,000 lbs/Ton = 0.7 Tons CH <sub>4</sub> /Day	33,600 cu. ft. CH <sub>4</sub> /Day = 0.7 Tons CH <sub>4</sub> /Day From Tilapia Fish Farming Wastes
<b>Subtotal Methane (CH<sub>4</sub>) Gas Production From Tilapia Fish Processing Wastes:</b>		
	194.5 Tons/Day Total Volatile Solids x 2,000 lb/Ton x 12 Cubic Feet (CF)/lb = 4,668,000 cu. ft./Day. 4,668,000 cu. ft. CH <sub>4</sub> /Day ÷ 24 lbs/cu. ft. = 194,500 lbs. 194,500 lbs ÷ 2,000 lbs/Ton = 97.3 Tons CH <sub>4</sub> /Day	4,668,000 cu. ft. CH <sub>4</sub> /Day = 97.3 Tons CH <sub>4</sub> /Day From Tilapia Fish Processing Wastes
<b>Total Methane (CH<sub>4</sub>) Gas Generation from all sources:</b>		
		249.9 Tons CH <sub>4</sub> /Day
<b>OAT Process Power Generation Potential:</b>		
	249.9 Tons CH <sub>4</sub> /Day x 2,000 lbs/Ton = 499,800 lbs/Day. 499,800 lbs/Day x 24 cu. ft./lb = 11,995,200 cu. ft./Day. 11,995,200 cu. ft./Day ÷ 83,780 cu. ft./MW = 143 MW. 143 MW less 15% parasitic digester plant use = 122 MW Net	122 MW Net
<b>Two-Phase Anaerobic Digester Size Calculations:</b>		
	Volatile Solids = 249.9 Tons/Day x 2,000 lbs/Ton = 499,800 lbs/Day	
	VS:COD = 1:2, COD = 999,600 lbs/Day	
	Organic Loading lbs COD/Day/Cubic Foot = 6	
	Digester Size = 999,600/6 = 166,600 Cubic Feet	
	Digester Size In Gallons = 1,246,335 Gallons	
	Safety Factor = 1.5	
	Digester Size = 1,869,502 Gallons (120' x 120' x 20'H)	
	Estimated Constructed Cost At US\$40/Gallon = \$74,780,080	
	Building Size: 1 km (3,280') x 1 km (3,280') x 3 - 50' stories high w/3 side double wall construction to accommodate photobioreactor and employee housing = 50,000,000 total sq. ft. of precast concrete construction estimated @ US\$1.50/sq. ft. = US\$75,000,000. Project building will manufacture its own cement and will purchase a ready mix plant (3 concrete delivery/mixer trucks) to minimize precast concrete panel construction costs.	
	Remanufactured 300Tons/Day Cement Kiln Purchase Cost = US\$12,000,000	
	Remanufactured Ready Mix Batch Plant Purchase Cost = US\$3,000,000	
	Photobioreactor: 2,200,000 foot long 12"Ø Clear PVC schedule 40 pipe = US\$100,000,000 to includes ultra high efficiency long lasting (10 years +) light emitting diode (LED) lighting for photosynthesis @ US\$10,000,000 Electricity requirements = 6.0 MW	
	10 MGY Biodiesel Manufacturing Equipment Cost Estimate: US\$15,000,000.	

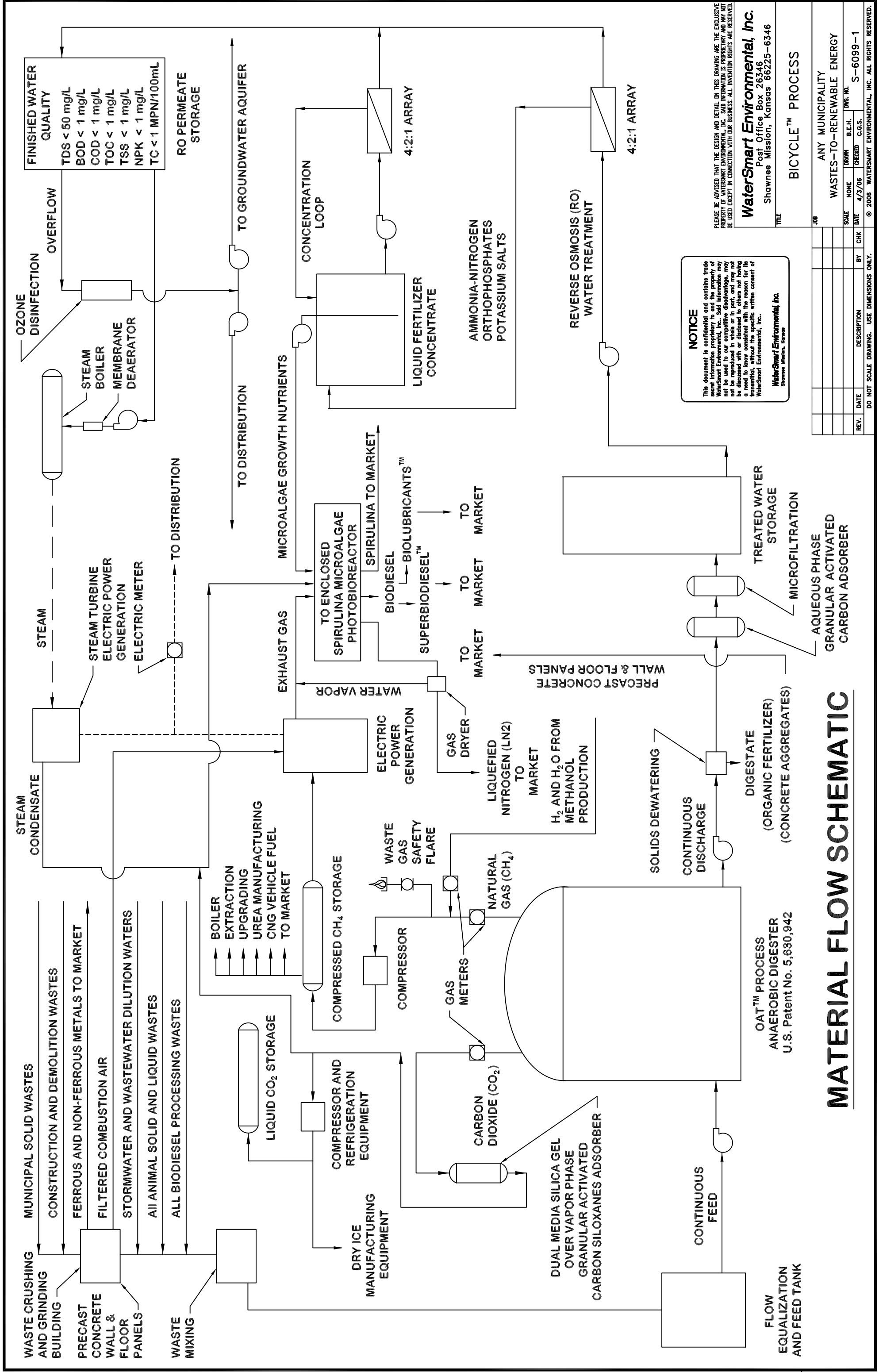
	<b>Electricity Requirements = 0.5 MW</b>	
	<b>Two (2) 110 GPM 4:2:1 Array Reverse Osmosis Equipment Cost Estimate: US\$2,000,000</b>	
	<b>Digester Equalization Feed Tank Cost Estimate: \$2,000,000 w/Equalization Tank Size = 120' x 120' x 20' H, 2,000,000 Gallon Capacity</b>	
	<b>Potable Water Tank Cost Estimate: \$2,000,000 w/Equalization Tank Size = 120' x 120' x 20' H, 2,000,000 Gallon Capacity</b>	
	<b>Anaerobic Digester Feed Tank Cost Estimate: \$2,000,000 w/Equalization Tank Size = 120' x 120' x 20' H, 2,000,000 Gallon Capacity</b>	
	<b>Liquefied Nitrogen Storage Tank Cost Estimate: \$2,000,000 w/Equalization Tank Size = 120' x 120' x 20' H, 2,000,000 Gallon Capacity</b>	
	<b>Liquefied Natural Gas (LNG) Storage Tank Cost Estimate: \$2,500,000 w/Equalization Tank Size = 120' x 120' x 20' H, 2,000,000 Gallon Capacity</b>	
	<b>EAF Steel Recycling Process Equipment Cost: US\$3,000,000</b>	
	<b>12,000,000 CFD Compressed Methane Gas (CNG) Equipment Cost Estimate = US\$10,000,000. Electricity Requirements = 2 MW</b>	
	<b>221 Ton/Day Liquefied Nitrogen Air Separation Equipment Cost Estimate: \$20,000,000. Electricity Requirements = 10 MW</b>	
	<b>Liquefied Nitrogen Delivery Equipment: US\$500,000</b>	
	<b>10,000 Sows Procurement Cost Estimate @ US\$500/Sow = US\$5,000,000</b>	
	<b>220,000 pigs/year (603 pigs/day) Swine Processing Equipment Cost Estimate: US\$5,000,000</b>	
	<b>51.5 MW Natural Gas Fueled Combined Cycle Power Generation Equipment @ US\$1,260/kW = 51,500 kW x US\$1,100 = US\$56,650,000</b>	
	<b>Total Electricity Generation Requirements:</b>	
	<b>For each project building: 51.5 MW (includes projected demand for the next 20 years</b>	
	<b>For Photobioreactor = 6.0 MW</b>	
	<b>For Compressed Natural Gas (CNG) = 2 MW</b>	
	<b>For Liquefied Nitrogen (LN2)(LIN) = 10 MW</b>	
	<b>For Liquefied Oxygen = Included with Liquefied Nitrogen</b>	
	<b>For Tilapia Farming = 0.5 MW</b>	
	<b>For Pig Farming = 2 MW</b>	
	<b>For General Building use = 2 MW</b>	
	<b>Total Electricity Installed Capacity Requirements = 51.5 MW</b>	
	<b>122 MW potential less 51.5 MW used = 70.5 MW remaining. At 83,779 cu. ft./MW, 83,779 cu. ft. x 70.5 MW = 5,906,420 cu. ft./Day available to marketplace at US\$0.70/126.67 cu. ft. or US\$32,640/Day as CNG automotive fuel. If sold to a natural gas pipeline the revenue would be slightly less by about 10%. If Argentina increases the marketplace price of natural gas some sales to natural</b>	

	gas pipelines would be considered.	
<b>Schedule of Project Construction Costs:</b>		
	Anaerobic Digester Feed Tank: US\$2,000,000	
	Biodiesel Manufacturing Equipment: US\$15,000,000	
	Building Size: 1 km x 1 km x 3 Stories High Constructed Cost: US\$75,000,000	
	Cement Kiln Constructed Cost: US\$12,000,000	
	Concrete Ready Mix Plant Constructed Cost = US\$3,000,000	
	EAF Steel Recycling Process Equipment Constructed Cost: US\$3,000,000	
	LED Lighting Purchase Cost: US\$10,000,000	
	Liquefied Natural Gas (LNG) Storage Tank: US\$2,500,000	
	Liquefied Nitrogen Air Separation Equipment: US\$15,000,000	
	Liquefied Nitrogen Delivery Equipment: US\$500,000	
	Liquefied Nitrogen Storage Tank: US\$2,000,000	
	Methane Compression Equipment: US\$10,000,000	
	Photobioreactor: US\$100,000,000	
	Potable Water Storage Tank Constructed Cost: US\$2,000,000	
	Power Generation Equipment: US\$56,650,000	
	Reverse Osmosis Equipment: US\$2,000,000	
	Sow Procurement Costs: US\$5,000,000 Electricity Requirements = 2.0 MW	
	Tilapia Fish Farming Acreage: 50 hectares x 24' H Tilapia Fish Farming Production: lbs/day = 281,400 of tilapia filets Tilapia Fish Farming Electricity Requirements = 0.5 MW Fish Processing Equipment: US\$500,000	
	Two-Phase Anaerobic Digester: US\$37,390,000	
	Subtotal Project Construction Costs: US\$353,540,000	
	Add 15% Contingencies @ 53,031,000 = US\$406,571,000	
	<b>Total Project Construction Costs:</b>	<b>US\$443,961,080</b>
<b>Project Visible Cash Flow Revenue Streams:</b>		
	From Sanitary Wastewater – US\$0.00	
	From Municipal Solid Wastes – US\$0.00	
	From Agro Wastes – US\$0.00	
	From Animal Wastes – US0.00	
	From Electricity: 44 MW x 24 = 720 MWh/Day @ US\$45.00/MWh = US\$47,520/Day. This amount of electricity generation will provide the average demand load of the participating communities for the next 20 years.	US\$47,520/Day
	From Biodiesel: 18,381 GPD always priced at 80% of existing marketplace retail. Current retail is US\$1.67/gallon. US\$1.67 x 80% = US\$1.34. 18,381 x US\$1.34 = US\$24,630/Day.	US\$24,630/Day
	From Liquefied Nitrogen (LN2)(LIN): 244,003 GPD priced at US\$0.50/gallon = US\$122,000.00/Day.	US\$122,000/Day
	From Compressed Natural Gas (CNG) Fuel:	US\$32,640/Day
	From Processed Pork Exports: Retail pork prices are currently around US\$2.87/lb. The wholesale producer receives about 43% of this price or US\$1.46/lb. The above prices represent the average for the last 3 years. As a commodity there is no guarantee they will drift up or down but will likely continue to fluctuate as they have been for the last 50 years. Current marketplace dressed pork yields are over 2,750 lbs/year/sow. A 10,000 sow farrow-to-finish operation is estimated to produce 27,500,000 lbs of dressed	

	pork/year or an average of 75,342 lbs/Day. At US\$1.46/lb the daily revenue is estimated at US\$110,000.00.	US\$110,000/Day
	From Fresh Tilapia Filet Exports: US\$613,452 at a sell price of US\$2.18/lb	US\$613,452/Day
	Renewable Energy and other Credits based on estimated 36 MW Project Power Generation:	
	One Certified Emission Reduction Credit = 1 Tonne CO <sub>2</sub> Reduction. 51.5 MW Project Power Production x 24 hour/Day = 1,236 MWh/Day. 1,236 MWh/Day x 1,100 lbs CO <sub>2</sub> Reduction (using natural gas)/MWh ÷ 2,000 lbs/Ton = 680 Tons/Day = 248,000 T/Year x 2,000/2,204 = 225,226 Tonnes/Year @ US\$20 (range of US\$20-US\$40) = US\$4,504,000/Year ÷ 365 = US\$12,341/Day for years 2008-2012 delivery.	US\$12,341/Day
<b>Total Project Revenue Streams:</b>		<b>US\$962,583/Day</b>
<p>To the extent that electricity is generated, the combustion off gases (CO<sub>2</sub>, NO<sub>x</sub>, N<sub>2</sub>, and H<sub>2</sub>O) will be entirely used for Spirulina microalgae production. After Spirulina microalgae production has occurred the remaining Nitrogen gas (N<sub>2</sub>) will be liquefied and sold to the marketplace. The remaining N<sub>2</sub> gas stream will also contain Oxygen gas (O<sub>2</sub>) due to the respiration of microalgae during their production in the same manner that trees and plants give off oxygen. This oxygen will be simultaneously liquefied during the liquefaction of N<sub>2</sub> and subsequently distilled off, compressed, and subsequently used internally as a welding gas, to enhance cement manufacturing, to enhance fish farming, and for smelting iron into steel. Some of the Nitrogen Gas will be used as a protective blanket gas in the production of methanol through syngas technology. The methanol is produced as a required feedstock in the production of biodiesel.</p>		

**Additional Notes:**

1. Land Requirements: Estimate 300 hectare
2. Time to design-build-install-operate is estimated at 36 months.
3. Lighting for tilapia must be a daily cycle of:
  - 7.5 hours of total darkness
  - 0.5 hours of sunrise (begins at 6 a.m. w/3 ft-candles)
  - 15.5 hours of daylight (max 10 ft-candles)
  - 0.5 hours of sunset (begins at 10 p.m. w/3 ft-candles)
4. Sufficient building room remains to add a 10,000 beef cattle operation, a 10,000 milker dairy farm, and significant poultry operations along with all of the associated processing equipment to produce value added products consisting of dressed beef, milk, and other dairy products, broilers, and eggs. All of these activities represent future economic development activities.



**FINISHED WATER QUALITY**  
 TDS < 50 mg/L  
 BOD < 1 mg/L  
 COD < 1 mg/L  
 TOC < 1 mg/L  
 TSS < 1 mg/L  
 NPK < 1 mg/L  
 TC < 1 MPN/100mL

**NOTICE**  
 This document is confidential and contains trade secret information proprietary to and the property of WaterSmart Environmental, Inc.. Said information may not be reproduced in whole or in part, and may not be discussed with or disclosed to others not having a need to know consistent with the reason for its transmittal, without the specific written consent of WaterSmart Environmental, Inc..  
 WaterSmart Environmental, Inc.  
 Shawnee Mission, Kansas

PLEASE BE ADVISED THAT THE DESIGN AND DETAIL ON THIS DRAWING ARE THE EXCLUSIVE PROPERTY OF WATERSMART ENVIRONMENTAL, INC. SAID INFORMATION IS PROPRIETARY AND MAY NOT BE USED EXCEPT IN CONNECTION WITH OUR BUSINESS. ALL INVENTION RIGHTS ARE RESERVED.

**WaterSmart Environmental, Inc.**  
 Post Office Box 26346  
 Shawnee Mission, Kansas 66225-6346

TITLE: BICYCLE™ PROCESS  
 JOB: ANY MUNICIPALITY WASTES-TO-RENEWABLE ENERGY  
 SCALE: NONE DRAWN: B.E.H. DWG. NO. S-6099-1  
 DATE: 4/3/06 CHECKED: C.G.S.  
 REV. DATE DESCRIPTION BY CHK  
 © 2006 WATERSMART ENVIRONMENTAL, INC. ALL RIGHTS RESERVED.

# MATERIAL FLOW SCHEMATIC

OAT™ PROCESS  
 ANAEROBIC DIGESTER  
 U.S. Patent No. 5,630,942

DO NOT SCALE DRAWING. USE DIMENSIONS ONLY.

FLOW EQUALIZATION AND FEED TANK

DIGESTATE (ORGANIC FERTILIZER) (CONCRETE AGGREGATES)

TREATED WATER STORAGE MICROFILTRATION

AMMONIA-NITROGEN ORTHOPHOSPHATES POTASSIUM SALTS

CONCENTRATION LOOP

LIQUID FERTILIZER CONCENTRATE

TO GROUNDWATER AQUIFER

TO DISTRIBUTION

TO DISTRIBUTION

TO DISTRIBUTION

TO DISTRIBUTION

TO DISTRIBUTION

TO DISTRIBUTION

TO DISTRIBUTION

TO DISTRIBUTION

TO DISTRIBUTION

TO DISTRIBUTION

TO DISTRIBUTION

TO DISTRIBUTION

TO DISTRIBUTION

TO DISTRIBUTION

TO DISTRIBUTION

TO DISTRIBUTION

TO DISTRIBUTION

TO DISTRIBUTION

TO DISTRIBUTION

TO DISTRIBUTION

TO DISTRIBUTION

TO DISTRIBUTION

TO DISTRIBUTION

TO DISTRIBUTION

TO DISTRIBUTION

TO DISTRIBUTION

TO DISTRIBUTION

TO DISTRIBUTION

TO DISTRIBUTION

TO DISTRIBUTION

TO DISTRIBUTION

TO DISTRIBUTION

TO DISTRIBUTION

TO DISTRIBUTION

TO DISTRIBUTION

TO DISTRIBUTION

TO DISTRIBUTION

TO DISTRIBUTION

TO DISTRIBUTION

TO DISTRIBUTION

TO DISTRIBUTION

TO DISTRIBUTION

TO DISTRIBUTION

TO DISTRIBUTION

TO DISTRIBUTION

TO DISTRIBUTION

TO DISTRIBUTION

TO DISTRIBUTION

TO DISTRIBUTION

TO DISTRIBUTION

TO DISTRIBUTION

TO DISTRIBUTION

TO DISTRIBUTION

TO DISTRIBUTION

TO DISTRIBUTION

TO DISTRIBUTION

TO DISTRIBUTION

TO DISTRIBUTION

TO DISTRIBUTION

TO DISTRIBUTION

TO DISTRIBUTION

TO DISTRIBUTION

TO DISTRIBUTION

TO DISTRIBUTION

TO DISTRIBUTION

TO DISTRIBUTION

TO DISTRIBUTION

TO DISTRIBUTION

TO DISTRIBUTION

TO DISTRIBUTION

TO DISTRIBUTION

TO DISTRIBUTION

TO DISTRIBUTION

TO DISTRIBUTION

TO DISTRIBUTION

TO DISTRIBUTION

TO DISTRIBUTION

TO DISTRIBUTION

TO DISTRIBUTION

TO DISTRIBUTION

TO DISTRIBUTION

TO DISTRIBUTION

TO DISTRIBUTION

TO DISTRIBUTION

TO DISTRIBUTION

TO DISTRIBUTION

TO DISTRIBUTION

TO DISTRIBUTION

TO DISTRIBUTION

TO DISTRIBUTION

TO DISTRIBUTION

TO DISTRIBUTION

TO DISTRIBUTION

TO DISTRIBUTION

TO DISTRIBUTION

TO DISTRIBUTION

TO DISTRIBUTION

TO DISTRIBUTION

TO DISTRIBUTION

TO DISTRIBUTION

TO DISTRIBUTION

TO DISTRIBUTION

TO DISTRIBUTION

TO DISTRIBUTION

TO DISTRIBUTION

TO DISTRIBUTION

TO DISTRIBUTION

TO DISTRIBUTION

TO DISTRIBUTION

TO DISTRIBUTION

TO DISTRIBUTION

TO DISTRIBUTION

TO DISTRIBUTION

TO DISTRIBUTION

TO DISTRIBUTION

TO DISTRIBUTION

TO DISTRIBUTION

TO DISTRIBUTION

TO DISTRIBUTION

TO DISTRIBUTION

TO DISTRIBUTION

TO DISTRIBUTION

TO DISTRIBUTION

TO DISTRIBUTION

TO DISTRIBUTION

TO DISTRIBUTION

TO DISTRIBUTION

TO DISTRIBUTION

TO DISTRIBUTION

TO DISTRIBUTION

TO DISTRIBUTION

TO DISTRIBUTION

TO DISTRIBUTION

TO DISTRIBUTION

TO DISTRIBUTION

TO DISTRIBUTION

TO DISTRIBUTION

TO DISTRIBUTION

TO DISTRIBUTION

TO DISTRIBUTION

TO DISTRIBUTION

TO DISTRIBUTION

TO DISTRIBUTION

TO DISTRIBUTION

TO DISTRIBUTION

TO DISTRIBUTION

TO DISTRIBUTION

TO DISTRIBUTION

TO DISTRIBUTION

TO DISTRIBUTION

TO DISTRIBUTION

TO DISTRIBUTION

TO DISTRIBUTION

TO DISTRIBUTION

TO DISTRIBUTION

TO DISTRIBUTION

TO DISTRIBUTION

TO DISTRIBUTION

TO DISTRIBUTION

TO DISTRIBUTION

TO DISTRIBUTION

TO DISTRIBUTION

TO DISTRIBUTION

TO DISTRIBUTION

TO DISTRIBUTION

TO DISTRIBUTION

TO DISTRIBUTION

TO DISTRIBUTION

TO DISTRIBUTION

TO DISTRIBUTION

TO DISTRIBUTION

TO DISTRIBUTION

TO DISTRIBUTION

TO DISTRIBUTION

TO DISTRIBUTION

TO DISTRIBUTION

TO DISTRIBUTION

TO DISTRIBUTION

TO DISTRIBUTION

TO DISTRIBUTION

TO DISTRIBUTION

TO DISTRIBUTION

TO DISTRIBUTION

# PROJECT KEY PROFESSIONAL STAFF

## *Curriculum Vitae*

7030

**Employee: C.G. (Chuck) Steiner, BS, JD**

### **Education**

St. John's University, Collegeville, Minnesota. B.S. Degree in Chemistry, 1959

Wm. Mitchell College of Law, St. Paul, Minnesota. J.D. Degree in Law, 1969

### **Publications**

Steiner, C. G., "Take a New Look at the RBS Process," Water & Wastes Eng., 41, (May, 1979)

Steiner, C. G., "The Biological Approach to the Rotating Disc Process," Presented at the First National Symposium on Rotating Biological Contractor Technology at the Seven Springs Mountain Resort, Champion, PA, (February 4-5, 1980).

Steiner, C. G., "A Primer on Separators and Particle Separation", Pollution Equipment News, Vol.18, No.3, (June, 1985).

Steiner, C. G., "Plate Separation--Budding Conventional Technology?", WATER/Engineering & Management, (March, 1986).

Steiner, C. G., WSE Publication No. 380, "Silica Contamination Removal From Spent Fuel Pools And Refueling Water Storage Tanks At Nuclear PWR Power Generation Plants", (June 1993).

Steiner, C. G., "Advanced Aqueous Waste Treatment Concepts", Presented at the Environmental Management and Technology Conference & Exhibition International at Atlantic City, NJ, (June 9-11, 1993).

Steiner, C. G., WSE Publication No. 394, "A Historical Review of Oil/Water Separator Designs", (March 1994).

Steiner, C. G., WSE Publication No. 796, "Design Manual and Tutorial – Particle/Liquid Separation Systems", (May, 1996).

Steiner, C. G., "Energy From Wastes", Asia Water, (October, 1999).

Steiner, C. G., "Understanding Anaerobic Treatment", Pollution Engineering, (February, 2000).

Steiner, C. G., "Biofuels For Energy Independence", REFOCUS, (March/April, 2003).

Steiner, C. G., "Kyoto Protocol-compliant waste-to-renewable energy with zero air, water, and solids pollution", The Bulletin on Energy Efficiency, (December, 2004).

Steiner, C. G., "Waste-to-Energy Plan", Pollution Engineering, (March, 2005).

Steiner, C. G., "Biodiesel – The Probable Only Fuel of the Future, Renewable or Otherwise", Earthtoys - Emagazine, (October, 2005).

Steiner, C. G., "Economic Development Through Biomass Waste-To-Energy Technology", Earthtoys - Emagazine, (December, 2005).

Steiner, C. G., "Energy Independence For Everyone, To Include Food, Natural Gas, Biodiesel, And Water As Well", The Bulletin on Energy Efficiency, (December, 2005).

Steiner, C. G., "THERE'S GOLD IN THEM THAR WASTE HILLS", Earthtoys - Emagazine, (April, 2006).

Steiner, C.G., "Reversing Global Warming Through A Worldwide Waste-To-Energy Policy", Earthtoys - Emagazine, (October, 2006).

Steiner, C. G., "**SuperGreen** Buildings Technology With Zero Greenhouse Gas (GHG) Emissions To The Environment", Earthtoys - Emagazine, (December, 2006).

Steiner, C. G., "**SuperGreen™**, Self-Fueled, Double Hull, **Dual-Biofuel™** Powered SuperStrong Concrete Barges and Ships That Exhibit Zero Greenhouse Gas (GHG) Emissions and Include Onboard Ballast Water Treatment", Earthtoys - Emagazine, (February, 2007).

### **Patents**

Two-Phase Anaerobic Digestion Process Utilizing Thermophilic Fixed Growth Bacteria (US Patent No. 5,630,942)

### **Certifications**

40 Hour OSHA Course, 1990-1997

### **Memberships**

American Council On **Renewable Energy**

American Institute of Chemist (Professional Chemist - Accredited)

American Meat Institute

American Society for Testing and Materials

American Water Works Association

Global Village Energy Partnership

Incinerator Institute of America, Member T-6 Testing Committee

National Air Pollution Control Association

National Canners Association

USEPA Combined Heat and Power (CHP) Partnership

Wastewater Equipment Manufacturers Association

Water Environment Federation

### **Experience Summary**

Thirty Five years in design, marketing, new product development, plant operation, and general management of water purification equipment manufacturing and supply.

### **Employment History**

President, Chief Executive Officer, and Principal Scientist of WaterSmart Environmental, Inc., a manufacturer of water and wastewater treatment equipment and a worldwide provider of next generation waste-to-**renewable energy** and other climate change technologies.

Chief Process Engineer for Smith & Loveless, Inc., a manufacturer of water and wastewater treatment equipment.

Product Manager for Pielkenroad Separator Company, a manufacturer of particle/liquid separation equipment.

Director of Environmental Services for Geo. A. Hormel & Company with P&L responsibility over its two pollution control equipment manufacturing divisions.

Director of Marketing for Cherne Industrial, Inc., a national supplier of packaged laboratories for the water and wastewater treatment industry.

Director of Environmental Control for Fire Engineers, Inc., a manufacturer of solid waste disposal incinerators.

Department Manager for Twin City Testing & Engineering Laboratories, Inc., a large regional independent testing laboratory.

Chief Analytical Chemist for Federal Cartridge Corporation, a munitions manufacturer.

R&D Chemist for 3M Company, a diversified manufacturer.

From the Human Resources Department of

**WaterSmart**  
**Environmental, Inc.**

