

Engineering Data Sheet

6001

Product: SkimAway™ Floating Oil Skimmer

Product Description

The SkimAway™ is an adjustable floating oil skimming device. It is used to gravity transfer free oil from one vessel to another. The SkimAway™ product is shown on attached drawings S-0201 (concrete vessel) and S-0202 (steel vessel). Its oil weir may be adjusted to oils of different specific gravities in order to achieve optimum performance. The following table lists the several models available.

Model	Capacity, GPM
101-A	3
101-B	12
101-C	27
101-D	50
101-E	108
101-F	192

Product Application

In order to gravity transfer separated oil from one vessel or compartment to another, some type of skimmer or weir is generally used. Oil weirs frequently result in unsatisfactory performance if variations in the specific gravity of the oil and/or liquid flow rate occur. This phenomenon is explained in the company's comprehensive design manual (WSE Publication 796) on particle/liquid separation. A floating oil skimmer, by comparison, automatically adjusts to changes in oil specific gravity as well as to dynamic liquid level variations thereby achieving extremely reliable operation.

If used in an oil/water separator vessel, the SkimAway™ should be deployed downstream from the inclined plate separator pack to minimize the opportunity of fouling due to floating debris.

Product Usage

When floating on water, the oil weir should be adjusted to a level approximately 5/16" above the water level. This adjustment results in an approximate 2" permanent oil layer on top with separated oils of specific gravity 0.90. Should the oil specific gravity be greater than 0.9, the resulting oil thickness layer will increase slightly. If less than 0.9, the thickness decreases slightly. Additional adjustment of the oil weir ought not to be necessary unless the specific gravity of the separated oil is less than 0.65 or greater than 0.95.

Mechanical Installation

This product may be shipped in one or two pieces. If two, socket glue the separated oil discharge piping together. An extension is provided (concrete tankage only) to use as a through-the-wall sleeve. Note that the separated oil discharge piping must be watertight.

- ◆ Install skimmer as shown on the attached drawing noting all dimensions.
- ◆ Support skimmer in the horizontal position using ropes or braces while vessel is filled with water.
- ◆ Remove the skimmer support. The unit is now ready for service.

Routine Maintenance

The SkimAway™ should be checked every few months to monitor routine operation. If the separated oils contain significant floating solids/debris, the SkimAway™ should be checked more frequently. Excessive floating debris can potentially foul its operation. Therefore, it may become necessary to manually remove floating solids to insure continued skimmer reliability.

Specifications

The separated oil will contain less than 1.0% water.

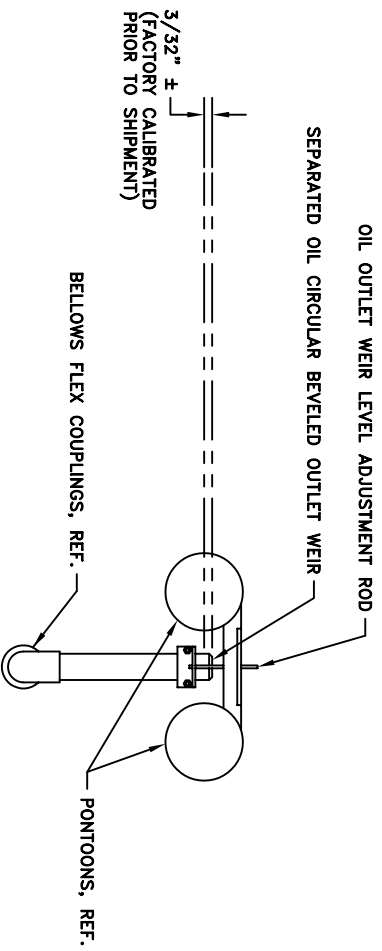
Distributor Pricing			
Model	Pipe Size Diameter	Capacity GPM	Price
101-A	1	3	\$1,900.00
101-B	2	12	\$2,500.00
101-C	3	27	\$2,900.00
101-D	4	48	\$3,300.00
101-E	6	108	\$3,700.00
101-F	8	192	\$4,100.00

Notes: Above prices are F.O.B. factory. Availability is two weeks ARO or ARAS.

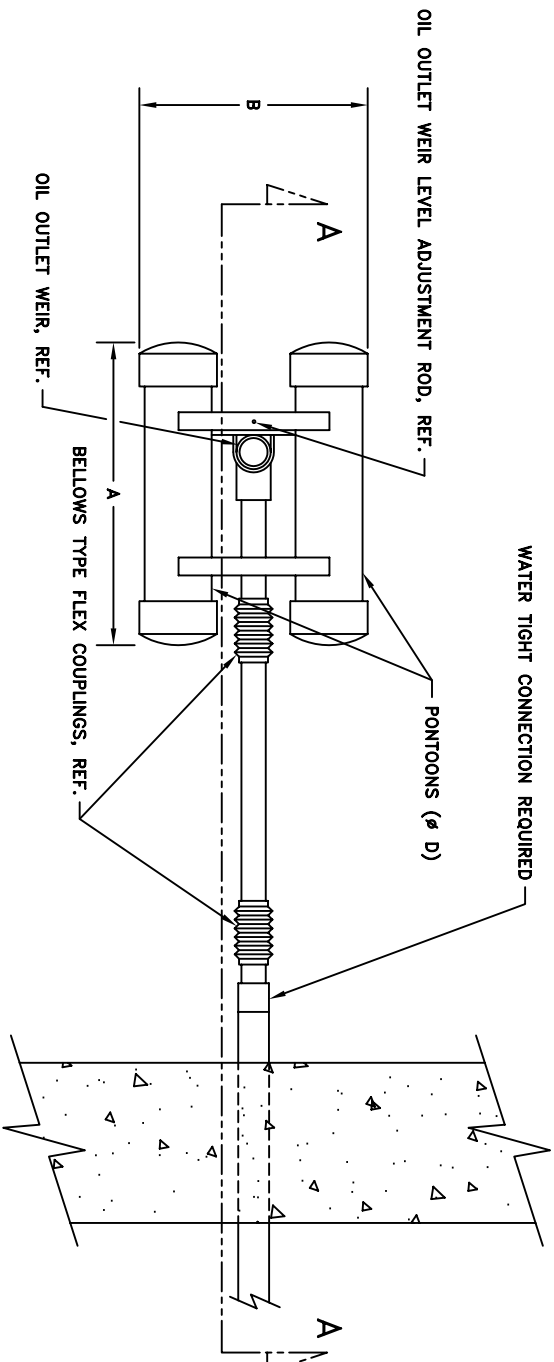
From the Engineering Department of
WaterSmart
Environmental, Inc.



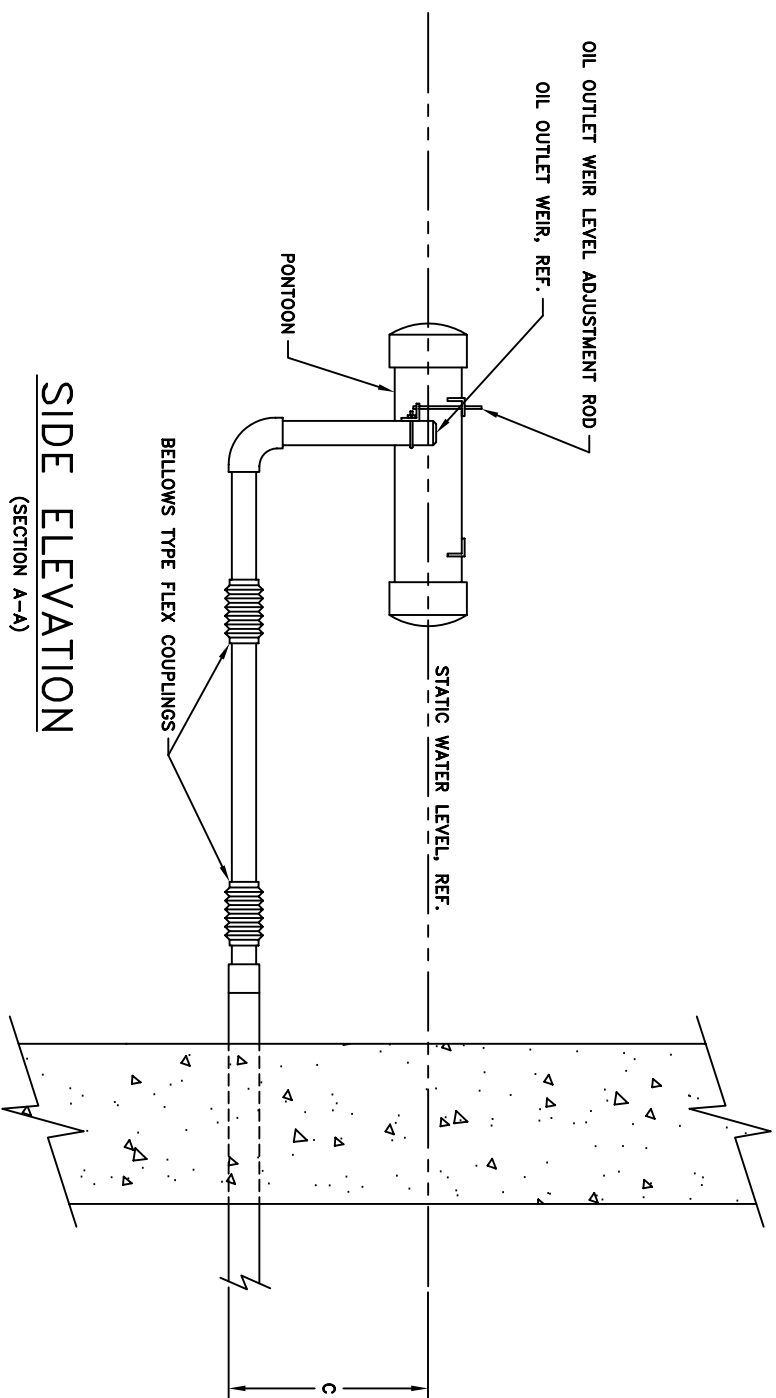
MODEL	DIMENSIONS				CAP. GPM	
	A	B	C	D		
101-A	15"	10"	8"	3"	1" Ø	3
101-B	20"	12"	8"	3"	2" Ø	12
101-C	24"	16"	8"	4"	3" Ø	27
101-D	26"	20"	12"	6"	4" Ø	50
101-E	30"	26"	12"	8"	6" Ø	108
101-F	36"	32"	12"	10"	8" Ø	192



END ELEVATION



PLAN VIEW



SIDE ELEVATION
(SECTION A-A)

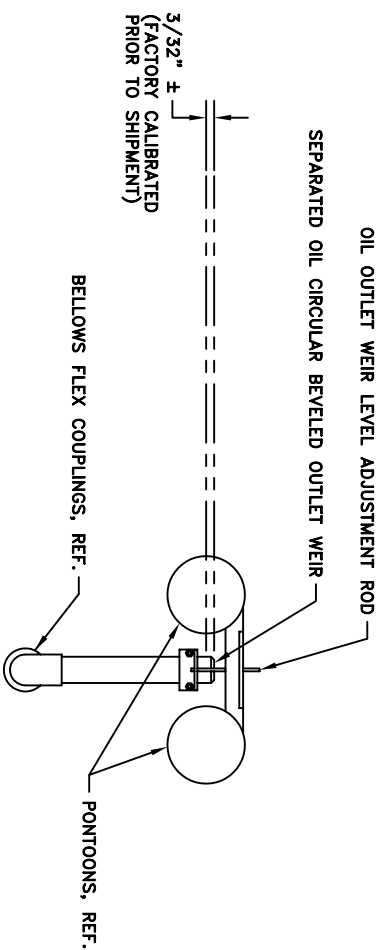
NOTE: SPECIFICATIONS AND DIMENSIONS ARE SUBJECT TO PRODUCT IMPROVEMENT ENGINEERING CHANGES AS REQUIRED WITHOUT NOTICE.

ADJUSTABLE FLOATING OIL SKIMMER

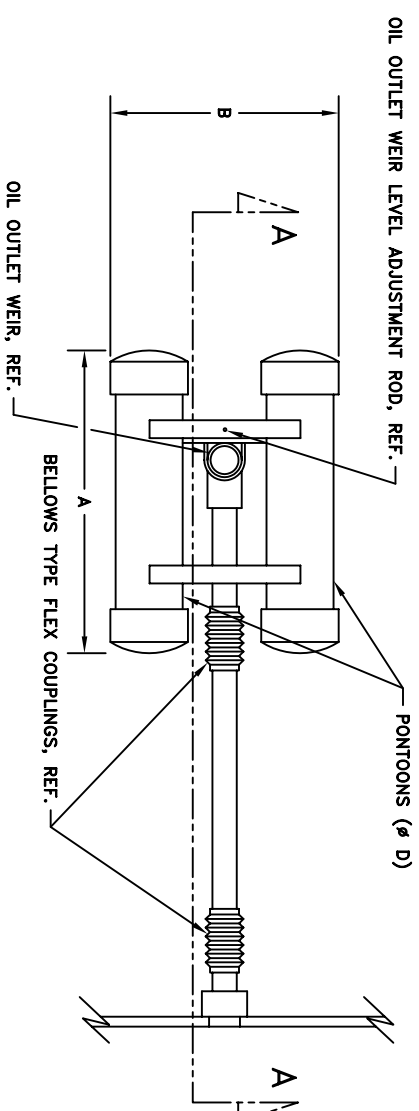
SkimAway™

REV.	DATE	DESCRIPTION	BY	CHK	SCALE	DRAWN	CHECKED	DWG. NO.
4	9/7/95	GENERAL REVISION	BEH	CSS				
3	11/1/94	GENERAL REVISION	BEH	CSS				
2	5/3/94	CHANGE HOSE TO RIGID PIPE	BEH	CSS				
1	4/28/92	GENERAL REVISION	BEH	CSS				
		DESCRIPTION						
		DATE						
		BY						
		CHK						
		DATE						
		BY						
		CHK						
		DATE						
		BY						
		CHK						
		DATE						
		BY						
		CHK						
		DATE						
		BY						
		CHK						
		DATE						
		BY						
		CHK						
		DATE						
		BY						
		CHK						
		DATE						
		BY						
		CHK						
		DATE						
		BY						
		CHK						
		DATE						
		BY						
		CHK						
		DATE						
		BY						
		CHK						
		DATE						
		BY						
		CHK						
		DATE						
		BY						
		CHK						
		DATE						
		BY						
		CHK						
		DATE						
		BY						
		CHK						
		DATE						
		BY						
		CHK						
		DATE						
		BY						
		CHK						
		DATE						
		BY						
		CHK						
		DATE						
		BY						
		CHK						
		DATE						
		BY						
		CHK						
		DATE						
		BY						
		CHK						
		DATE						
		BY						
		CHK						
		DATE						
		BY						
		CHK						
		DATE						
		BY						
		CHK						
		DATE						
		BY						
		CHK						
		DATE						
		BY						
		CHK						
		DATE						
		BY						
		CHK						
		DATE						
		BY						
		CHK						
		DATE						
		BY						
		CHK						
		DATE						
		BY						
		CHK						
		DATE						
		BY						
		CHK						
		DATE						
		BY						
		CHK						
		DATE						
		BY						
		CHK						
		DATE						
		BY						
		CHK						
		DATE						
		BY						
		CHK						
		DATE						
		BY						
		CHK						
		DATE						
		BY						
		CHK						
		DATE						
		BY						
		CHK						
		DATE						
		BY						
		CHK						
		DATE						
		BY						
		CHK						
		DATE						
		BY						
		CHK						
		DATE						
		BY						
		CHK						
		DATE						
		BY						
		CHK						
		DATE						
		BY						
		CHK						
		DATE						
		BY						
		CHK						
		DATE						
		BY						
		CHK						
		DATE						
		BY						
		CHK						
		DATE						
		BY						
		CHK						
		DATE						
		BY						
		CHK						
		DATE						
		BY						
		CHK						
		DATE						
		BY						
		CHK						
		DATE						
		BY						
		CHK						
		DATE						
		BY						
		CHK						
		DATE						
		BY						
		CHK						
		DATE						
		BY						
		CHK						
		DATE						
		BY						
		CHK						
		DATE						
		BY						
		CHK						
		DATE						
		BY						
		CHK						
		DATE						
		BY						
		CHK						
		DATE						
		BY						
		CHK						
		DATE						
		BY						
		CHK						
		DATE						
		BY						
		CHK						
		DATE						
		BY						
		CHK						
		DATE						
		BY						
		CHK						
		DATE						
		BY						
		CHK						
		DATE						
		BY						
		CHK						

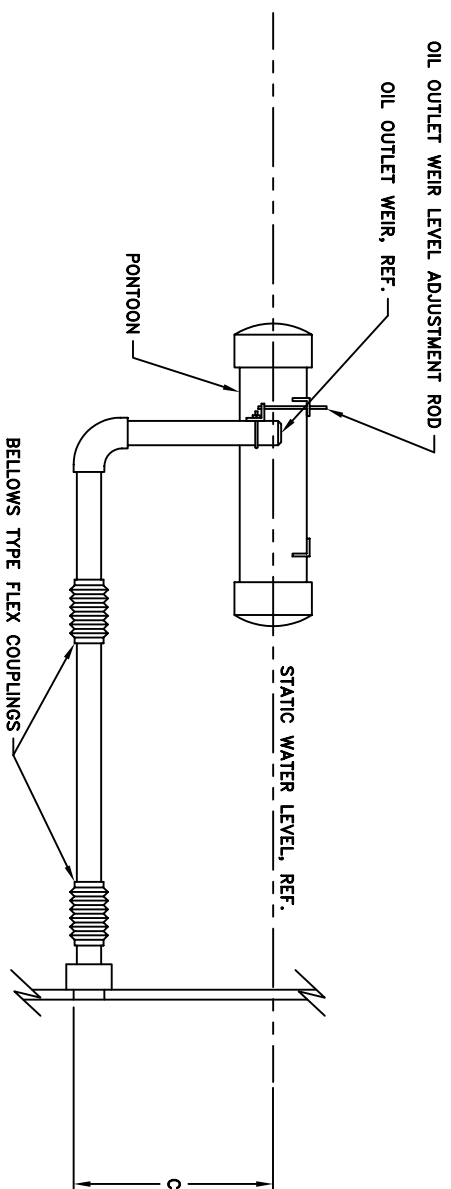
MODEL	DIMENSIONS				CAP. GPM	
	A	B	C	D OIL OUTLET		
101-A	15"	10"	8"	3"	1" Ø	3
101-B	20"	12"	8"	3"	2" Ø	12
101-C	24"	16"	8"	4"	3" Ø	27
101-D	26"	20"	12"	6"	4" Ø	50
101-E	30"	26"	12"	8"	6" Ø	108
101-F	36"	32"	12"	10"	8" Ø	192



END ELEVATION



PLAN VIEW



SIDE ELEVATION
(SECTION A-A)

NOTE: SPECIFICATIONS AND DIMENSIONS ARE SUBJECT TO PRODUCT IMPROVEMENT ENGINEERING CHANGES AS REQUIRED WITHOUT NOTICE.

ADJUSTABLE FLOATING OIL SKIMMER

SkimAway™

REV.	DATE	DESCRIPTION	BY	CHK	SCALE	DRAWN	CHECKED	DWG. NO.
					NONE			S-0202
					9/8/95			

DO NOT SCALE DRAWING. USE DIMENSIONS ONLY.

PLEASE BE ADVISED THAT THE DESIGN AND DETAIL ON THIS DRAWING ARE THE EXCLUSIVE PROPERTY OF WATERSMART ENVIRONMENTAL, INC. SAID INFORMATION IS PROPRIETARY AND MAY NOT BE USED EXCEPT IN CONNECTION WITH OUR BUSINESS. ALL INVENTION RIGHTS ARE RESERVED.

WaterSmart Environmental, Inc.
 Post Office Box 26346
 Shawnee Mission, Kansas 66225

TITLE: **FLOATING OIL SKIMMER**